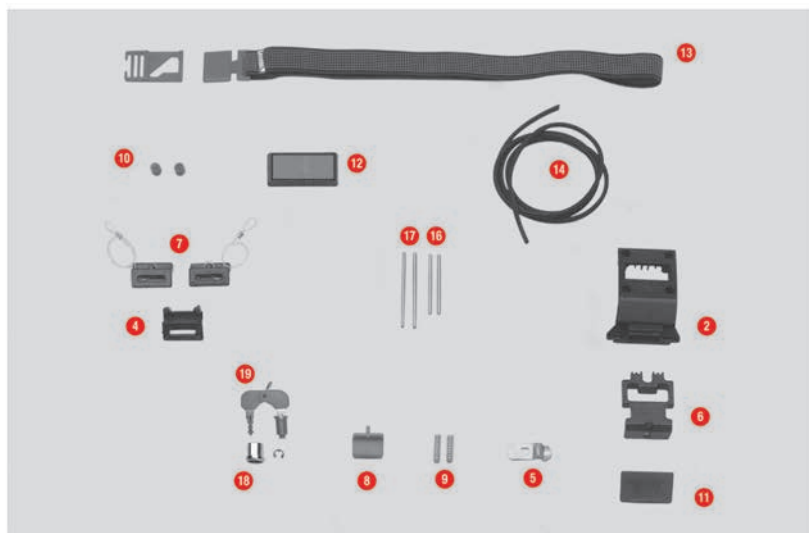


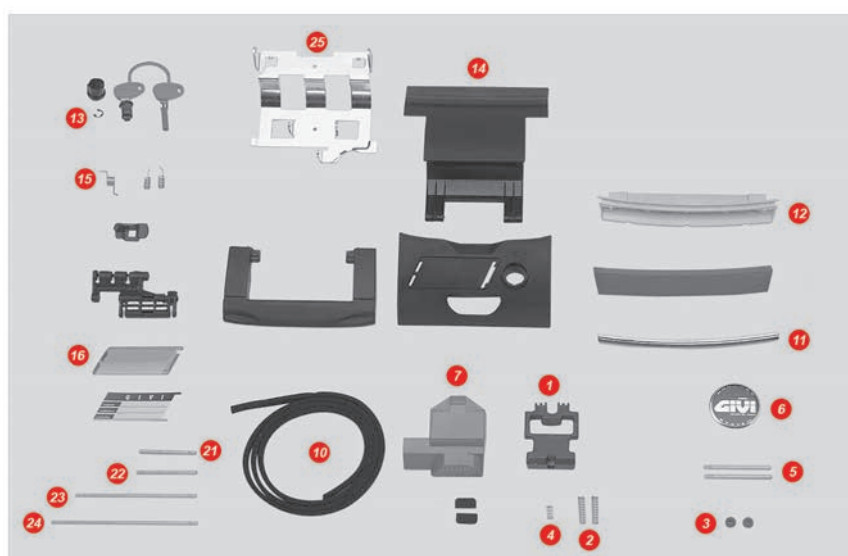
## E28



2	Z101	Push set protection	\$	13,00
5	Z105 ▲	Key lock plate	\$	3,00
6	Z106	Bolt	\$	11,00
7	Z107 ▲	Bag yarn	\$	4,00
8	Z108	Top-case push button red	\$	3,00
9	Z109	Long bolt springs	\$	2,00
10	Z112R	Red pulley, 4 pcs.	\$	4,00
11	Z118 ▲	Plate two holes	\$	3,00

12	Z119	Top-case reflector	\$	7,00
14	Z159R	Bag lock lining, 1 pcs.	\$	3,00
15	Z1237	Push button spring with washer	\$	2,00
16	Z193	Hinge pin 62 mm	\$	2,00
17	Z195	Pin D. 04x80 mm	\$	2,00
18	Z210	Chrome bushing for lock set	\$	3,50
19	Z140R	Key locks with corresponding bush with red handle	\$	11,00

## E35



1	Z106	Bolt	\$	11,00
2	Z109	Long bolt springs	\$	2,00
3	Z112R	Red pulley, 4 pcs.	\$	4,00
4	Z1237	Push button spring with washer	\$	2,00
5	Z193	Hinge pin 62 mm	\$	2,00
6	Z200	GIvi logo Monokey®	\$	5,00
7	Z282	Push button	\$	6,00
8	Z298	Handle felt	\$	1,00
10	Z840 ▲	8x5mm shell packing black	\$	6,00
11	Z362	Light seat chromed	\$	5,00
12	Z828	Stop lamp holder	\$	6,00

	Z358	Circuit with lamps for version with stop light already mounted	\$	20,00
13	Z140R	Key locks with corresponding bush with red handle	\$	11,00
15	Z284	Maxia spring rod 1,3	\$	2,00
16	Z286	Glass for small name plate	\$	3,00
19	Z290N ▲	Hinge black	\$	21,00
21	Z294	Pin 55,5 mm	\$	2,00
22	Z295	Pin 58,5 mm	\$	2,00
23	Z296 ▲	Pin 101 mm	\$	2,00
24	Z297 ▲	Pin 140 mm	\$	2,00
25	Z287	Maxia hinge plate	\$	10,00