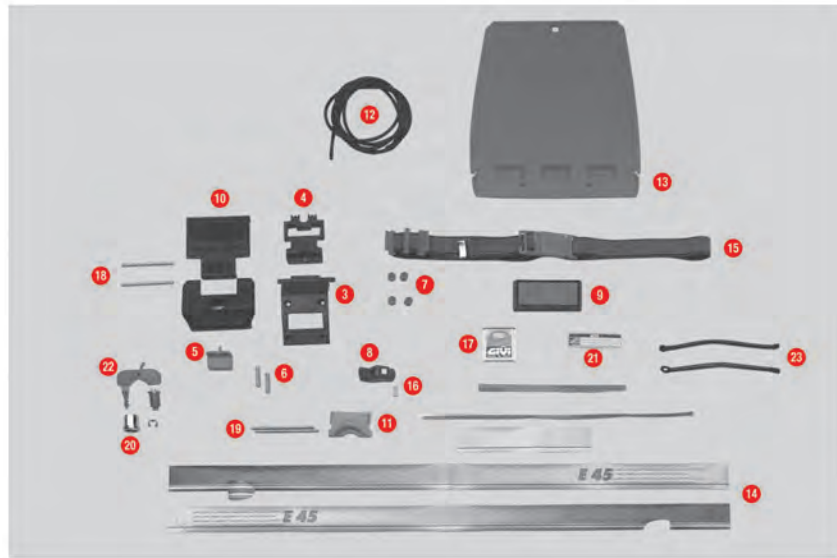


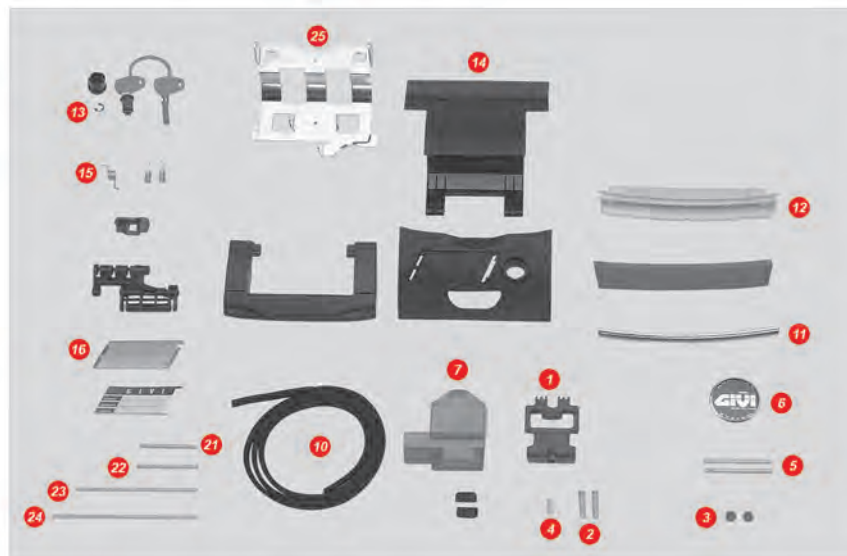
E45



1	Z36CNM	E36 - E45 top-shell black	\$	71,00
2	Z45FNM	E45 bottom-shell black	\$	103,00
3	Z101	Push set protection	\$	13,00
4	Z106	Bolt	\$	11,00
5	Z108	Top-case push button red	\$	3,00
6	Z109	Long bolt springs	\$	2,00
7	Z112R	Red pulley, 4 pcs.	\$	4,00
8	Z153	Key lock plate	\$	3,00
9	Z119	Top-case reflector	\$	7,00
10	Z152N	Top-case hinge E45 black	\$	12,00
11	Z117	Hinge plate	\$	3,00
12	Z159R	Bag lock lining, 1 pcs.	\$	3,00

13	Z160	Inner document holder	\$	14,00
14	Z166	Series stickers E45	\$	9,00
15	Z167 ▲	Spare elastic belt	\$	10,00
16	Z1237	Push button spring with washer	\$	2,00
17	Z186	Rectangular GIVI mark	\$	5,00
18	Z590R	Pin. Medium, 2 pcs.	\$	2,00
19	Z195	Pin D. 04x80 mm	\$	2,00
20	Z210	Chrome bushing for lock set	\$	4,00
21	Z405 ▲	Name holder	\$	3,00
22	Z156	Key for case lock	\$	10,00
23	Z664	Stop bag opening yarn with plastic sleeve	\$	2,00
	Z155	Pass belt clip	\$	2,00

E35 TRAFFIC II



1	Z106	Bolt	\$	11,00
2	Z109	Long bolt springs	\$	2,00
3	Z112R	Red pulley, 4 pcs.	\$	4,00
4	Z1237	Push button spring with washer	\$	2,00
5	Z193	Hinge pin 62 mm	\$	2,00
6	Z200	GIVI logo Monokey®	\$	5,00
7	Z282	Push button	\$	6,00
8	Z298	Handle felt	\$	1,00
11	Z362	Light seat chromed	\$	5,00
12	Z828	Stop lamp holder	\$	6,00

	Z358	Circuit with lamps for version with stop light already mounted	\$	20,00
13	Z140R	Key locks with corresponding bush with red handle	\$	11,00
15	Z284	Maxia spring rod 1,3	\$	2,00
16	Z286	Glass for small name plate	\$	3,00
19	Z290N ▲	Hinge black	\$	21,00
21	Z294	Pin 55,5 mm	\$	2,00
22	Z295	Pin 58,5 mm	\$	2,00
23	Z296 ▲	Pin 101 mm	\$	2,00
24	Z297 ▲	Pin 140 mm	\$	2,00
25	Z287	Maxia hinge plate	\$	10,00