

2019

**MOBILITY
SOLUTIONS**



POWERSPORTS
PERFORMANCE COMPONENTS



MAGURA



MAGURA has excelled as an acknowledged OEM leader for the global two-wheel industry for over 90 years, setting standards in safety, comfort and innovation. MAGURA is a pioneer in the world of hydraulics. It's no surprise to find long-established international companies such as BMW, KTM, Triumph, Ducati and many more turning to MAGURA when it comes to steering, brake and clutch products. MAGURA has been on board with BMW, for example, from their very first machine right through to the present day!

Improved safety and the development of innovative hydraulics technology have been the motivating forces driving the MAGURA brand for over nine decades. For high performance motor racing or everyday comfort – MAGURA makes an important contribution to ensuring that safety is a top priority for cyclists and MOTORCYCLE riders.



HIGHLIGHTS 2019 6

The Rok Bagoros X-line Special-Edition and HC³ Black 6

125 YEARS MAGURA 8

MAGURA HCT 12

HC¹ Radial-Master 14
 HC³ Radial-Master 18

HYDRAULIC MASTER CYLINDERS 22

167 Hydraulic brake and clutch master cylinder 22

MAGURA HYMEC 24

HYMEC Off-Road and HYMEC On-Road 26
 HYMEC replacement clutch slave cylinders 29
 Build your own HYMEC clutch system 30

MAGURA PERFORMANCE PARTS FOR BMW 32

Replacement levers 34
 BMW Upgrade Parts for R-Models 35

X-LINE HANDLEBARS 36

CLASSICS 40

73 Sport brake lever 42
 73.202 Sport brake dual pull lever 42
 74 Sport clutch lever 42
 101 Clutch lever 43
 108 Brake lever 43
 12 Decompression lever 43
 225 Hydraulic brake and clutch lever 43
 233 Throttle twist grip with mechanical brake 44
 273 Throttle twist grip with mechanical brake 44
 307 Throttle twist grip 44
 309 Throttle twist grip 44
 314 Duo throttle twist grip 45
 317 Electric throttle twist grip 45
 700 Rear brake master cylinder 45

MAGURA SPARE PARTS AND ACCESSORIES 46

HC¹ spare parts and accessories 48
 HC³ spare parts and accessories 50
 167 HYMEC spare parts and accessories 52
 HYMEC for Harley spare parts 54
 195 Radial master cylinder spare parts 55
 167 Hydraulic master cylinder spare parts (brake/clutch) 56
 190 Radial master cylinder spare parts 57
 163 Hydraulic clutch master cylinder spare parts 58
 750/770 Radial supermoto brake system spare parts 59
 Accessoires 60

LIQUI MOLY 64

All prices listed are recommended retail pricing valid from the 01.05.2018 and include 19% VAT.

Specifications are subject to change with prior notice

Pricing, delivery and other terms and conditions are those in effect at time of delivery.

Any and all riding stunts printed in this catalogue have been completed by professional riders in a controlled environment and are only possible with exceptional skill and experience combined with intensive training. Please do not under any circumstance attempt to replicate these actions!

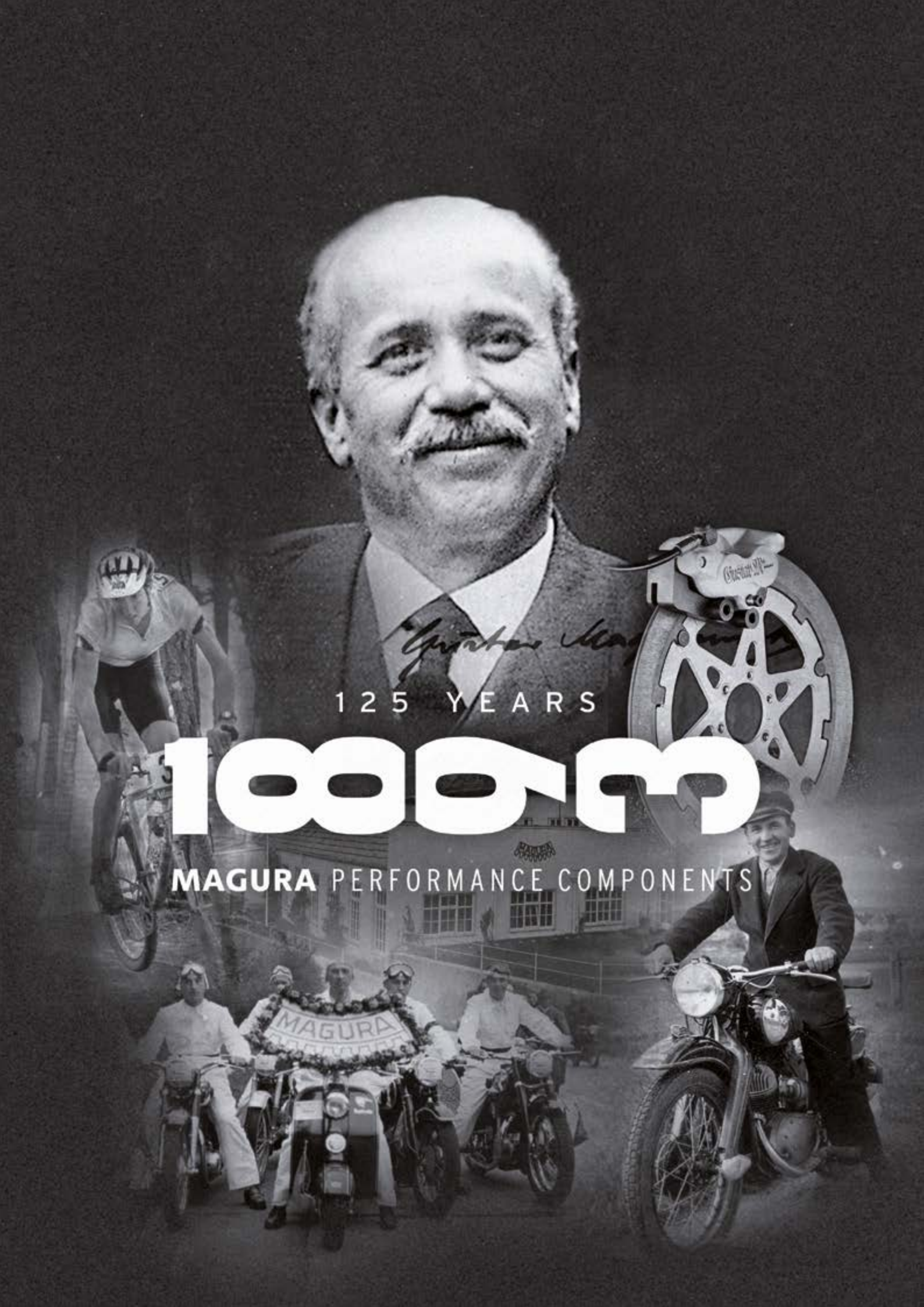
HIGH- LIGHTS



THE ROK BAGOROS X-LINE SPECIAL-EDITION –
MORE STYLE AND MORE PERFORMANCE.
THIS X-LINE HANDLEBAR HAS BEEN DEVELOPED TO-
GETHER WITH THE INTERNATIONALLY RENOWNED
STUNT RIDER ROK BAGOROS: THE SPECIAL EDITION
VERSION IMPRESSES WITH IMPROVED ERGONOMICS
AND EXCLUSIVE ROK-DESIGN! A TYPICAL MAGURA
X-LINE HANDLEBAR AND STILL VERY MUCH UNIQUE!
FOR MORE DETAILS SEE PAGE 38



HC³ BLACK – PREMIUM GRADE ALUMINIUM ALLOY - ANODISED BLACK WITH RED FEATURES. THESE MASTER CYLINDERS ARE A HIGHLIGHT ON EVERY MOTORCYCLE AND IMPROVE THE PERFORMANCE OF THE CLUTCH AND BRAKE. DETAILS FROM PAGE 20.



125 YEARS

1000100

MAGURA PERFORMANCE COMPONENTS

125 YEARS OF MAGURA: A STORY OF SUCCESS

SUCCESS FOR 125 YEARS

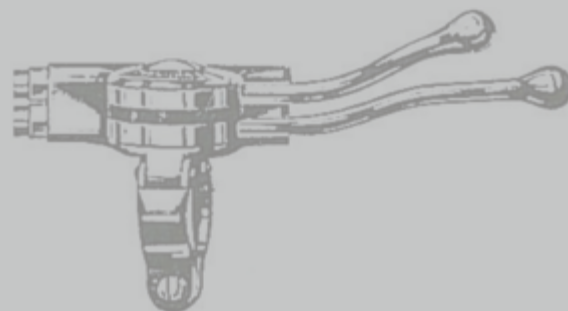
125 years of MAGURA History: from the gear rack, which still forms the main symbol in the company logo, to the production of modern electronic components and self-developed high tech composite materials. For decades MAGURA has proved itself to be a reliable and competent partner to the motorcycle and bicycle industry. In the last few years MAGURA has been more and more a propelling and innovative force in the area of electric mobility.

Gustav Magenwirth, born in 1866 in Bad Urach, would look back at these developments with a proud smile. He was renowned as a man who thought hard how best to improve designs and was well ahead of his time. He always placed great value on the flexibility of his company. To the very present day his flexibility remains as an important characteristic of MAGURA and a corner stone of the company's success.

Beginning as an apprentice and later working as an employee with Karl Benz the MAGURA founder went on to produce engines, hydraulic pumps, plastics, bicycle and motorcycle components. Gustav Magenwirth invented one of the milestones in the company history in the form of the straight cable activation lever for motorcycles, which led to the beginning of a cooperation which remains to this day with the BMW Motorrad division. The combination of tradition and progress is still evident to this very day and the once family home of the company founder is now used as the main company headquarters for the holding company MAGENWIRTH Technologies in Bad Urach.

Even when the company experienced hard times, particularly during the Great Depression in 1928 and in the years until the end of the Second World War, Magenwirth and his daughters Julie, Martha and Klara were always looking ahead. The following generation was marked by husbands and sons, men like Eugen Munz and Werner Auch, who forged the future progress of the company. The fourth generation of the family is now at the forefront in the form of Fabian Auch who is the great grandson of Gustav Magenwirth. MAGURA continues to look and think ahead: MAGURA Powersports concentrates on everything to do with steering, braking and clutch activation for first class performance according to the highest quality standards. Renowned as an innovative and creative think-tank MAGURA continue to delight customers with well-considered new solutions. In addition the cooperation and development work with several big players in the motorcycle industry leads to new benchmark products in terms of comfort, safety and control.

As a competent partner to the international motorcycle industry MAGURA has an excellent reputation. The company always keeps an eye on the market trends away from the OEM business and is also able to supply excellent products with great attention to detail for use in the high end customising scene.



1893
2018



PERFORMANCE RE-DEFINED

In 1957 MAGURA acquired a plastic injection moulding facility for the development of its own products and sophisticated design construction. Nowadays the MAGURA composite production takes place in a modern facility in Hülben, close to Bad Urach. A number of self-developed materials like Carbotecture® und Carbotecture SL® are used to manufacture high quality parts in the injection moulding factory. The neighbouring production facility in Hengen employs 130 workers who produce bicycle brakes, motorcycle components and industrial controls. The affiliated company Bebro electronics is also within a half hour drive from Bad Urach and delivers the technical know-how for electronic assemblies, devices and systems.

Currently MAGURA divides the business into four important domains: Bike, Powersports, Controls and Composite.

The MAGURA motorcycle componentry domain retains its advantage by consequently developing new innovative solutions. Increased safety, more comfort and constant improvements in performance characterise the products from MAGURA Powersports. All OEM and Aftermarket products from MAGURA have been known for decades to provide quality and pioneering technology. High performance master cylinders like HC3 and HC1 stand out with important technical features like the patented HCT primary seal or the advanced secondary seal technology. R&D departments from leading motorcycle manufacturers, race teams, custom shops, motorcycle dealers, accessory shops as well as specialised workshops and motorcycle riders – they all value MAGURA as a supplier of high end motorcycle components.



.....

The bike domain at MAGURA has managed within the last 30 years to move from newcomer, with the invention of the first hydraulic bicycle brake systems in 1987, to technology leader within the bicycle component market. High-Tech-Componentry is manufactured from self-developed products and materials and the success of the MT-Series has been well proven as Test-Winner brake in various comparison tests. Innovative world firsts like the suspension fork eLECT or the first wireless adjustable seat post "VYRON" place MAGURA at the leading edge of new bicycle technologies.

The motorcycle and bicycle business has been expanding year on year at MAGURA. The sales through our associated companies in the USA and Asia ensure worldwide

.....

availability of our products. MAGURA is also the service partner for Bosch E-Bike-Components and Drive units since the original market introduction. The long standing cooperation with Bosch led to the 2015 development of the first bicycle ABS Disk Brake which was introduced to the general public in 2017. Since that same year MAGURA has also been involved in a joint venture project with various renowned companies, such as ZF Friedrichshafen, to develop products and strategies to promote the E-Mobility market in the future.

The traditional company from Bad Urach looks back at 125 years of success. This company history is not only a good reason to celebrate the past but also an obligation to shape the future with confidence and spirit.



THE RADIAL FAMILY

HCT

POWERSPORTS
TECHNOLOGY



BRAKE AND CLUTCH LIKE A PRO

TWO VERSIONS OF THE BRAKE AND CLUTCH SYSTEMS BASED ON HCT TECHNOLOGY ARE CURRENTLY AVAILABLE. MAGURA OFFERS PERFECTION FOR ALL MOTORBIKE AFICIONADOS FROM COMFORT-ORIENTED TOURING RIDERS AND DISCERNING CUSTOM BIKE FANS TO RACING PROFESSIONALS.

The HCT patented MAGURA technology significantly improves the responsiveness of brake and clutch. Developed for the racetrack, the system inspires motorcycle professionals and recreational riders alike. In extreme conditions like racing, the novel "Advanced Seal Technology" prevents air from penetrating the hydraulic system. The HCT design diminishes internal friction, emphatically improving brake and clutch perfor-

mance. The HCT hydraulic system uses a slotted piston with a stationary primary seal. It is fully compatible with all brake systems, with or without ABS (as of Q3.2018). Damage caused by ABS kickbacks is also prevented. With its innovative HCT, MAGURA is once again setting the trends for comfort, safety and riding enjoyment.



POWERED WITH



HC¹ RADIAL
MASTER CYLINDER

280 d

STREET KING





AT A GLANCE:

- For superbikes, supermotos and road sports specialists
- Optimal lever kinematics
- Brake lever reach is individually adjustable
- Highest possible manufacturing quality
- Lever and cylinder parts are forged
- Direct pressure point
- Sensitive and powerful braking and clutch operation
- Space-saving design
- Unmatched price-performance ratio
- ABS-compatible
- Leading international stunt riders rely on the HC¹

THE COMPACT

HCT



OPTIMIZED REACH ADJUST

ADVANCED SEAL TECHNOLOGY

DOT OR MAGURA BLOOD (CLUTCH)

DOT (BRAKES)

EASY BLEED

EASY MOUNT

VARIOUS RESERVOIRS

WARNING
CLEAN RUBBER CAP
BEFORE REASSEMBLY
USE ONLY
DOT 4
BRAKE FLUID

IF YOUR OWN REQUIREMENTS IN DRIVING DYNAMICS, SAFETY AND COMFORT ARE MORE DEMANDING AND YOU WANT TO MAKE A GOOD BIKE EVEN BETTER, THEN IT'S TIME FOR THE NEW HC¹ FROM MAGURA. THE DECISION TO OPTIMISE YOUR OWN MOTORCYCLE IS MADE EASY BY THIS COMPACTLY-DESIGNED RADIAL FITMENT.

Every real fan of motorcycles will love the confidence-inspiring sensation of being able to brake and operate the clutch much more precisely, and the feeling of the strong, direct pressure point. We truly believe that you won't want to do without the performance of a MAGURA radial master cylinder once you've experienced it. Thanks to the pump's diagonal inclination, the HC¹ is also very easy to mount. Like all brand products from MAGURA, this ABS-compatible radial fitment stands out from the rest with its cutting-edge technology, sophisticated ergonomics and of course the outstanding MAGURA craftsmanship down to the last detail.

The HC¹ is supplied with a pre-mounted brake light switch and a compensating reservoir. Levers in two different lengths are available as spare parts, as well as various types of reservoir with matching holders and mirror mounting brackets.



HC¹ BRAKE MASTER

DESCRIPTION	ORDER CODE	RRP
HC ¹ Brake Master Piston diameter 18 mm, long lever blade	2100453	309,95 €
HC ¹ Brake Master Piston diameter 15 mm, long lever blade	2100451	309,95 €
HC ¹ Brake Master Piston diameter 12 mm, short lever blade	2100452	309,95 €

HC¹ CLUTCH MASTER

DESCRIPTION	ORDER CODE	RRP
HC ¹ Clutch Master Piston diameter 16 mm (for DOT), long lever blade	2100457	309,95 €
HC ¹ Clutch Master Piston diameter 13 mm (for DOT), long lever blade	2100489	309,95 €
HC ¹ Clutch Master Piston diameter 12 mm (for DOT), long lever blade	2100454	309,95 €
HC ¹ Clutch Master Piston diameter 13 mm (for mineral oil*), long lever blade	2100456	309,95 €
HC ¹ Clutch Master Piston diameter 12 mm (for mineral oil**), long lever blade	2100455	309,95 €

* Suitable for use with BMW and KTM mineral oil clutch activation systems.
** Suitable for MAGURA HYMEC applications.

OPTIONAL EXTRAS


(must be ordered separately)

- Short brake lever
- Mirror mount clamp
- Double banjo connector for 2 brake lines
- Radial adapter for HYMEC pressure line
- Various reservoir options
- HCT reservoir covers

ITEMS INCLUDED WITH DELIVERY

Every ready-to-mount HC¹ is delivered with these package contents:

- Banjo bolt with sealing rings (M10x1)
- Remote reservoir
- Standard clamp (without mirror mount)
- Brake light or start safety switch
- ABE for brake fitments
- Owner's Manual

 **SPARE PARTS AND ACCESSORIES**
ON PAGES 48-49

The complete current ABE recommended fitment listing with additional models can be found available to download at magura.com

IF YOUR MOTORCYCLE IS NOT LISTED IN OUR ABE YOU CAN SEND US DETAILS ON THE CURRENT MASTER CYLINDER USED ON YOUR MOTORCYCLE AND REQUEST A RECOMMENDATION FOR A REPLACEMENT OPTION. YOU CAN THEN ARRANGE AN APPOINTMENT WITH YOUR TECHNICAL SERVICE PARTNER AND REQUEST A SINGLE VEHICLE APPROVAL FOR THE UPGRADE PARTS.

HC³ RADIAL
MASTER CYLINDER

90°

TAKE THE LEAD





AT A GLANCE:

- For superbikes, supermotors and road sports specialists
- CNC-machined aluminium housing
- 90° radial design
- 3-way adjustable lever bearing point
- Folding lever
- Advanced Seal Technology
- Reservoir kit
- Titanium fixing screws
- ABS-compatible

THE PROFESSIONAL

HC3

APPROVED BY
GRIP GIRLS RACING, YAMAHA KLEIN,
SASCHA SCHODER, AARON COLTON,
MATTIE GRIFFIN, MEDAZA CYCLES,
MARKUS VOLZ, RAPTOR RACING,
RACEFOXX AND RS RACING.



MACHINED ALUMINIUM BODY – this master cylinder body has been produced from high grade aluminium alloy to ensure a lightweight design combined with maximum rigidity which has been built to last.

90° FULL RADIAL DESIGN – Pushrod and cylinder at right angle to handlebar results in decreased friction and more direct brake feeling for improved control.

FULL ABS COMPATIBILITY – MAGURA “HCT” is approved for continuous use with all ABS systems without loss of performance due to pressure compensation (ABS-Kickback). (Status Q3.2018)

3 WAY LEVER RATIO – The hand activated master cylinder lever has a clever 3 way adjustable point of support. This mimics the effect of using a piston size 1 mm below and above the selected hydraulic ratio. Simply remove and reposition the lever support retaining bolt for a softer or harder pressure point. All 3 positions offer 90° full radial activation.

FOLDING LEVER BLADE – Reduces the force exerted on the master cylinder body in the event of a fall over. This will increase the possibility to continue riding following a fall over incident.

ADVANCED SECONDARY SEAL TECHNOLOGY – The rear piston seal has been specially designed to prevent the introduction of air through secondary seal ingress. The advanced X-Ring seal design will reduce or eliminate this problem common on racing motorcycles at higher RPM.

RESERVOIR MOUNT – The master cylinder is supplied with an external reservoir and mounting bracket designed to use minimum space and with smoked glass to optically determine the level and condition of the brake fluid at all times.

TITANIUM RETAINING BOLTS – Lever and clamp retaining bolts are high grade titanium saving weight while remaining strong and durable.



HC³ BRAKE MASTER

MODEL	COLOUR	ORDER CODE	RRP
HC ³ Brake Master Piston diameter 18 mm = 17 to 19 mm (fully ABE approved)	Black	2100691	799,95 €
	Gold	2100299	799,95 €
HC ³ Brake Master Piston diameter 15 mm = 14 to 16 mm (fully ABE approved)	Black	2100689	799,95 €
	Gold	2100297	799,95 €
HC ³ Brake Master Piston diameter 12 mm = 11 to 13 mm, short lever blade, without switch and ABE (race version)	Black	2100690	799,95 €
	Gold	2100298	799,95 €

HC³ CLUTCH MASTER

MODEL	COLOUR	ORDER CODE	RRP
HC ³ Clutch Master Piston diameter 15 mm = 14 to 16 mm (for brake fluid use - DOT)	Black	2100692	799,95 €
	Gold	2100300	799,95 €
HC ³ Clutch Master Piston diameter 12 mm = 11 - 13 mm (for mineral oil use*)	Black	2100693	799,95 €
	Gold	2100301	799,95 €


* Suitable for use with BMW and KTM mineral oil clutch activation systems
Suitable for use with MAGURA HYMEC applications

OPTIONAL EXTRAS

(must be ordered separately)

- Short fold lever*
- Mirror mount clamp
- Remote lever adjuster
- Double banjo connector for 2 brake lines
- Radial adapter for HYMEC pressure line
- HCT reservoir covers

* Standard equipment on 12 mm HC³ Brake Master for racing

 **SPARE PARTS AND ACCESSORIES
ON PAGES 50-51**

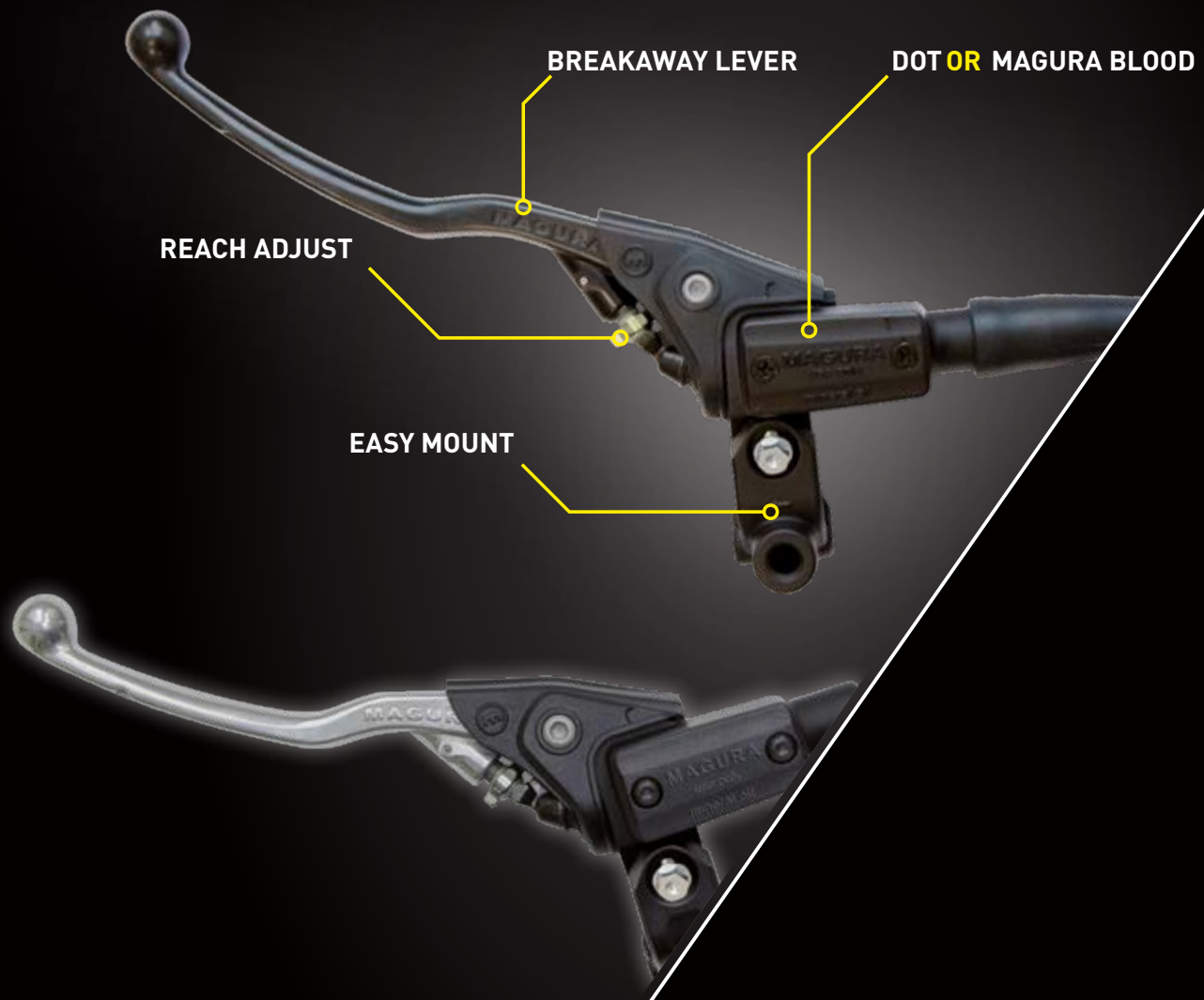
DELIVERY INCLUDES

Each HC³ master cylinder comes ready to install and delivery includes:

- 3 Way Lever Ratio (mimics ±1mm hydraulic ratio adjustment)
- Banjo Connector with sealing rings
- Remote Reservoir
- Standard Clamp (without mirror mount)
- Pre-Installed Switch (for brake or clutch activation)
- ABE (German TÜV Approval) for Ø 15 mm and Ø 18 mm brake master
- Owner's Manual

The complete current ABE recommended fitment listing with additional models can be found available to download at magura.com

IF YOUR MOTORCYCLE IS NOT LISTED IN OUR ABE YOU CAN SEND US DETAILS ON THE CURRENT MASTER CYLINDER USED ON YOUR MOTORCYCLE AND REQUEST A RECOMMENDATION FOR A REPLACEMENT OPTION. YOU CAN THEN ARRANGE AN APPOINTMENT WITH YOUR TECHNICAL SERVICE PARTNER AND REQUEST A SINGLE VEHICLE APPROVAL FOR THE UPGRADE PARTS.



MASTERS
QUALITY MADE
IN GERMANY

167 HYDRAULIC BRAKE AND CLUTCH MASTER CYLINDER

Hydraulic brake and clutch control, one piece aluminium cylinder with reservoir, forged and break-optimised alloy lever blade, improved reach adjust, easy to fit with a folding clamp, the compact construction avoids collisions when riding extreme off road. The cylinder and lever blade pivot are protected against the elements with a rubber cap. Available for use with mineral oil or brake fluid.

MODEL	PISTON-Ø IN MM	MEDIUM	DESCRIPTION/APPLICATION	ORDER CODE	RRP
CLUTCH MASTER					
Clutch Master 167.2 ls	9,5	Mineral oil	Black Off-Road Master cylinder, silver lever blade 123 mm without deco lever, clutch switch or mirror-mounting bracket	2701581	149,95 €
Clutch Master 167.1 ls	10,5	Mineral oil	Black Off-Road Master cylinder, silver lever blade 123 mm without deco lever, clutch switch or mirror-mounting bracket	2701582	149,95 €
Clutch Master 167.2 ls	9,5	DOT4/5.1	Black Off-Road Master cylinder, silver lever blade 123 mm without deco lever, clutch switch or mirror-mounting bracket	2701583	149,95 €
Clutch Master 167.1 ls	10,5	DOT4/5.1	Black Off-Road Master cylinder, silver lever blade 123 mm without deco lever, clutch switch or mirror-mounting bracket	2701584	149,95 €
Clutch Master 167.2 ls	9,5	Mineral oil	Black Off-Road Master cylinder, silver lever blade 146 mm, deco lever, clutch switch, mirror-mounting bracket	2700183	210,15 €
Clutch Master 167.1 ls	10,5	Mineral oil	Black Off-Road Master cylinder, silver lever blade 146 mm, deco lever, clutch switch, mirror-mounting bracket	2700186	210,15 €
Clutch Master 167.2 ls	9,5	DOT4/5.1	Black Off-Road Master cylinder, silver lever blade 146 mm, deco lever, clutch switch, mirror-mounting bracket	2700184	210,15 €
Clutch Master 167.1 ls	10,5	DOT4/5.1	Black Off-Road Master cylinder, silver lever blade 146 mm, deco lever, clutch switch, mirror-mounting bracket	2700187	210,15 €
Clutch Master 167.2 ls	9,5	Mineral oil	Black Street Master cylinder, black lever blade 163 mm, deco lever, clutch switch, mirror-mounting bracket	0723295	196,65 €
Clutch Master 167.1 ls	10,5	Mineral oil	Black Street Master cylinder, black lever blade 163 mm, deco lever, clutch switch, mirror-mounting bracket	2700185	183,10 €
Clutch Master 167.6 ls	12	Mineral oil	Black Street Master cylinder, black lever blade 163 mm, clutch switch BMW, mirror-mounting bracket BMW (M10x1.5 mm)	2700482	208,10 €
BRAKE MASTER					
Brake Master 167.51 ls	13	DOT4/5.1	Black Off-Road Master cylinder, black lever blade 163 mm, with brake light switch and mirror mount	2701418	214,95 €
Brake Master 167.60 ef	9,5	DOT4/5.1	Silver Off-Road Master cylinder, silver lever blade 123 mm, with brake light switch and standard mount	2701419	204,95 €



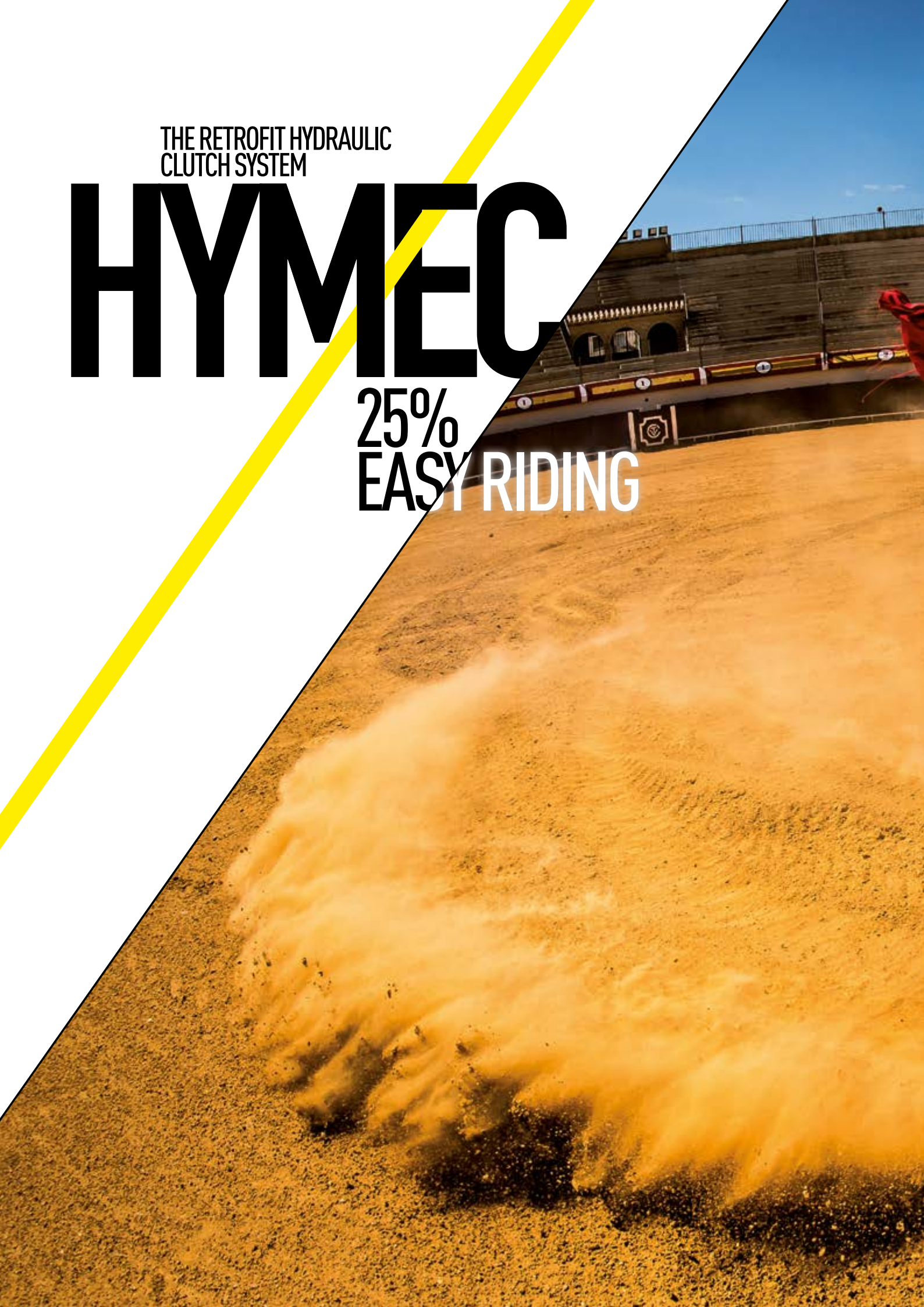
**SPARE PARTS AND ACCESSORIES
ON PAGE 56**

* Find clutch switches page 52-53 and 61
Maximum stroke | 13.8 mm
Lever ratio | 1:4
Tubing fitting | M 10x1

THE RETROFIT HYDRAULIC
CLUTCH SYSTEM

HYMEC

25%
EASY RIDING





Switch to HYMEC now for hydraulic clutch action. On-road or off-road, on long tours or your home circuit – with HYMEC every trip is just that bit more comfortable. Up to 25 percent less strength needed for clutch action and a clearly defined, constant bite point. HYMEC for an easier biking life.

- robust
- easy to mount
- excellent modulation
- reduced maintenance

HYMEC



BREAKAWAY LEVER

REACH ADJUST

The HYMEC ensures an easier operating pressure, a constant pressure point, no more cable adjustment and smooth clutch actuation to ensure the perfect take-off every time. HYMEC significantly improves vehicle performance – it allows the user to feel the point where the clutch releases and actuates. This product has been developed over many years and been tested under the toughest conditions possible in the world of motorcycle Off-Road sport. It has been used by world champion riders who all agree as to the benefits but it is just as useful to the complete novice who stalls at the traffic lights. Due to demand MAGURA now offers the HYMEC system for various road going motorcycles.

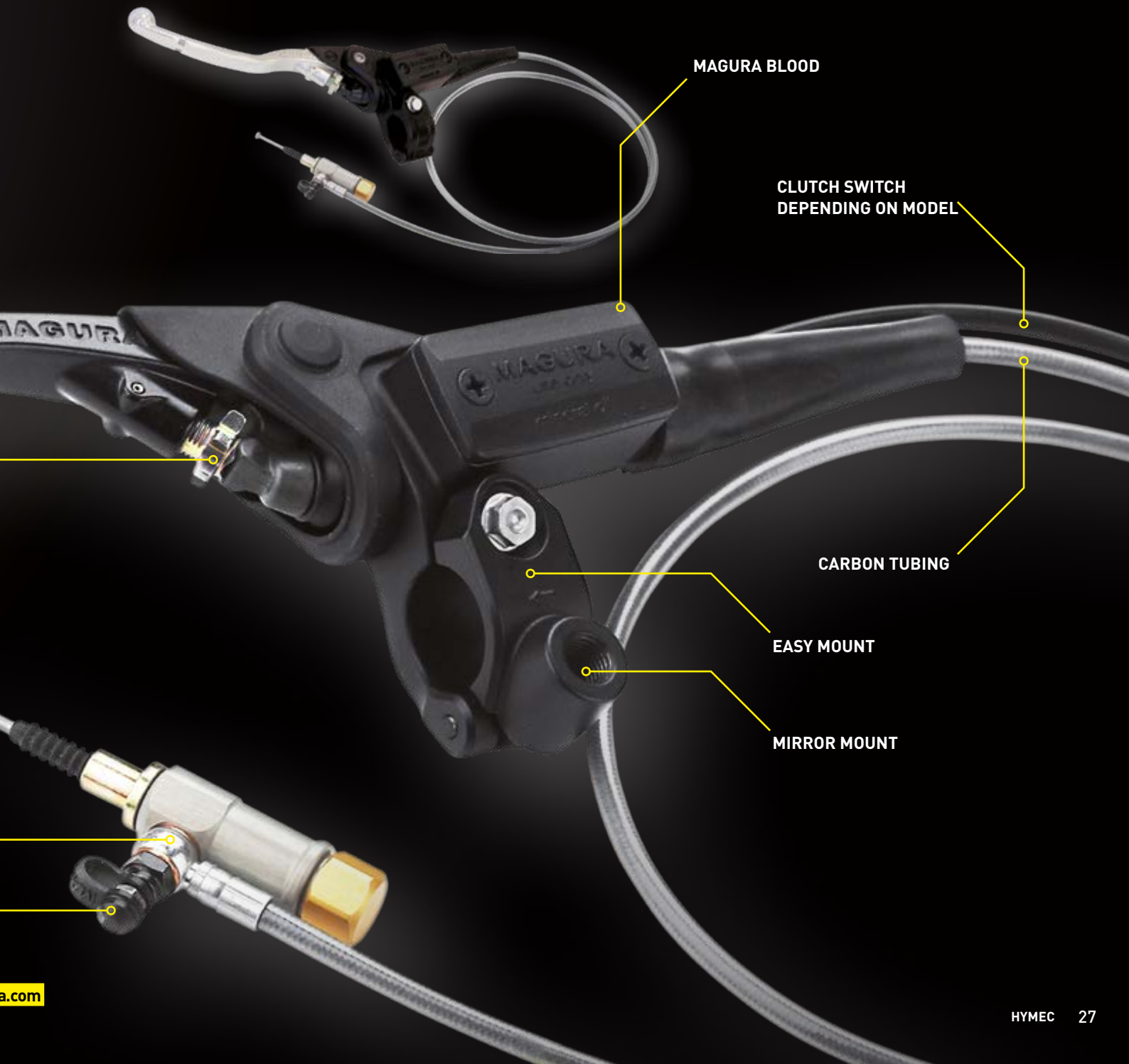
RHR ROTATABLE HOSE ROUTING

EASY FILL

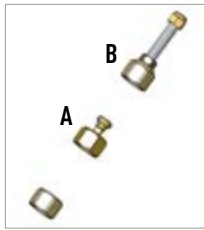
HYMEC OFF-ROAD: from 289,95 €
HYMEC ON-ROAD: from 332,95 €

The complete current ABE recommended fitment listing with additional models can be found available to download at magura.com

MAGURA HYMEC – AN EASY TO INSTALL ALTERNATIVE TO A MECHANICAL CLUTCH. THIS SYSTEM REPLACES THE CLUTCH LEVER AND CABLE – WITH A SMALL LIGHTWEIGHT HYDRAULIC SYSTEM FOR IMPROVED CLUTCH CONTROL.



OPTIONAL EXTRAS FOR YOUR HYMEC SLAVE CYLINDER



HYMEC-SLAVE-REAR CAP KIT:

Contains standard, rearmount and rearmount vario cap options.

ORDER CODE 2100018
RRP 29,95 €



NIPPLE ADAPTER KIT:

If your clutch cable has a large attachment nipple you will require a nipple for the end of your HYMEC slave cylinder activation rod.

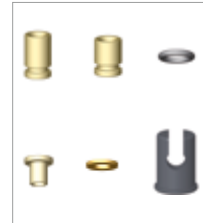
ORDER CODE 2701674
Contains both an 11 and 14 mm attachment nipple adapter
RRP 11,95 €

A. REARMOUNT:

If your slave cylinder is attached with a rearmount together with any of the mounting adapters listed on page 52, pos. 28 you may require this REARMOUNT cap.

B. REARMOUNT VARIO:

This kit enables the fitment of the HYMEC slave cylinder STANDARD as a REARMOUNT VARIO option. The VARIO option allows for adjustment and extends the fitment length by 55 to 77mm and can be used with all of the slave cylinders listed on page 29.



2 STROKE ATTACHMENT KIT:

If the HYMEC slave cylinder is located under the clutch cover it may be necessary to use one of the sleeves in conjunction with an o-ring.

ORDER CODE 2701697
RRP 26,95 €

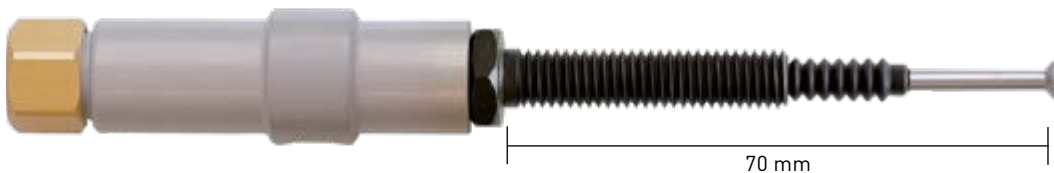
REPLACEMENT HYMEC CLUTCH SLAVE CYLINDERS

If you have an older HYMEC clutch activation system and require a replacement slave cylinder but are not aware of the correct part number we have devised a method to make it easier for you to establish the part number for the replacement. Remove the slave cylinder from the motorcycle and activate the master cylinder until the slave cylinder activation rod is fully retracted and withdrawn. The piston in the slave cylinder is now contacting the bronze cap at the back of the slave cylinder and the rod length should be measured as shown on top of page 29. If the slave cylinder is no longer working it can be removed from the pressure line and forced slowly and carefully into the slave cylinder for the measurement.

Please note – the length you are measuring is not the activation length – the activation length is 16mm longer than the withdrawn length. Following the measurement please do not disregard your old slave cylinder you may require the cap or the support. All of our replacement HYMEC slave cylinders are delivered with the standard cap and standard support as shown in the pictures. If the slave cylinder you require lies between two different activation lengths – always order the longer version and use spacers between the support and the cable attachment to increase the activation length to suit your motorcycle.

SPECIAL REPLACEMENT HYMEC SLAVE CYLINDERS

STANDARD VARIO



BMW F 800

- F 700 GS
- F 800 GS
- F 800 R
- F 800 S
- F 800 ST
- F 800 GT
- F 650 GS (2-Cylinder)
- HUSQVARNA NUDA

activation length 57-78 mm

ORDER CODE 2100022
RRP 119,65 €

STANDARD BOLT



HARLEY SPORTSTER AB 1996

Spacer block for assembly should be removed after installation.

ORDER CODE 0722160
RRP 123,60 €

STANDARD BOLT

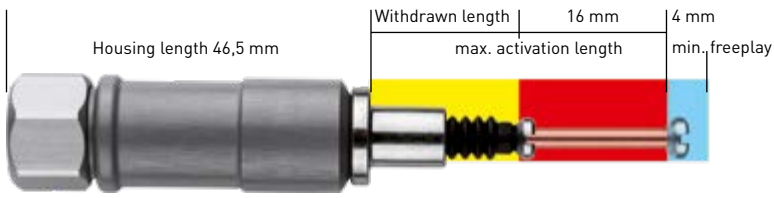


BUELL XB-MODELLE 2002 – 2010

Spacer block for assembly should be removed after installation.

ORDER CODE 0120624
RRP 119,65 €

EXAMPLE



STANDARD

Replacement HYMEC Slave Cylinders – to measure your slave cylinder – activate the master cylinder until the pull rod is fully withdrawn.

		WITHDRAWN LENGTH	ACTIVATION LENGTH
A		16 mm	31–33 mm ORDER CODE 2100308 RRP 113,45 €
B		24 mm	39–41 mm ORDER CODE 0120649 RRP 113,45 €
C		31 mm	46–48 mm ORDER CODE 0120648 RRP 113,45 €
D		35 mm	51–53 mm ORDER CODE 0120655 RRP 113,45 €
E		41 mm	56–58 mm ORDER CODE 0120652 RRP 113,45 €
F		45 mm	60–62 mm ORDER CODE 0120651 RRP 113,45 €
G		50 mm	65–67 mm ORDER CODE 2100003 RRP 113,45 €
H		55 mm	70–72 mm ORDER CODE 0120653 RRP 113,45 €
J		67 mm	82–84 mm ORDER CODE 0120659 RRP 113,45 €
K		90 mm	105–107 mm ORDER CODE 0120657 RRP 113,45 €

BUILD YOUR OWN HYMEC HYDRAULIC CLUTCH!

HYMEC is the solution for riders with small hands, reduced hand operating force and riders who require a precise clutch activation with a constant pressure point. Due to the number of enquiries we receive for HYMEC systems for motorcycles we have not measured, or have no ready to fit option for, we have completed this double page to assist you in the configuration of a new system. This should enable you to check if the system will fit your motorcycle and which parts list you will require to do so.

The MAGURA HYMEC-System is world renowned as a hydraulic conversion for cable operated mechanical clutch systems. The system is compatible with most clutch activations and offers a direct and constant pressure point. The advantages of this system are well documented in the press and riders forums.

WHAT DO I NEED TO BUILD A HYMEC FOR MY BIKE?

1. MASTER CYLINDER + 2. SLAVE CYLINDER + 3. PRESSURE LINE, FITTINGS AND OIL + 4. SPECIFIC SPARE PARTS

1. MAGURA OFFER 3 MASTER CYLINDER OPTIONS:

Master Cylinder – as the system requires mineral oil and cannot be used with brake fluid the master cylinder should be mineral oil compatible.



HC¹ SLANTED RADIAL MASTER
ORDER CODE 2100455
Max. slave stroke: 10 -13 mm*
Full details on page 16

HC¹ – Reservoir, switch and banjo bolt included

Optional extras on page 48/49



HC³ FULLY RADIAL MASTER
ORDER CODE 2100301
Max. slave stroke: 8 -13 mm*
Full details on page 20

HC³ - Reservoir, switch and banjo bolt included

Optional extras on page 50/51

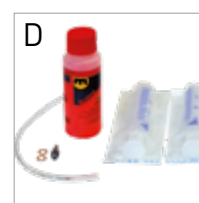
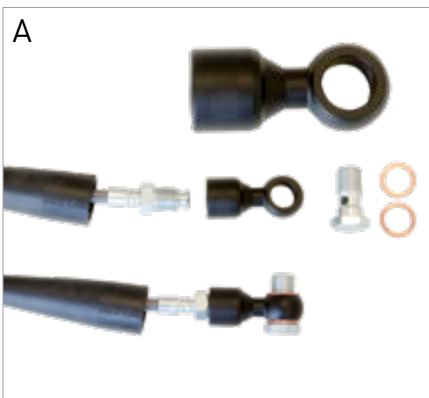


167 AXIAL MASTER
Ø 9,5 Street (Light operation)
ORDER CODE 0723295
Max. slave stroke: 8-10 mm*
Ø 10,5 Street (Sports clutch)
ORDER CODE 2700185
Max. slave stroke: 10-12 mm*
Full details on page 22
167 Street Master – switch, mirror clamp and black street lever included

Optional extras on page 56

2. PRESSURE LINE, FITTINGS AND SERVICE-KIT

PART DESCRIPTION	ORDER CODE	HC ¹	HC ³	167
A Radial Pressure Line Adapter	2700499	x	x	-
B Pressure Line L=1500 mm cut to size	0722679	x	x	x
B Pressure Line carbon L=1045 mm fixed length	0722138	x	x	x
B Pressure Line carbon L=1120 mm fixed length	0722137	x	x	x
C Banjo Bolt with Bleeder for slave	0722136	x	x	x
D Service-Kit HYMEC (Fill and Bleed Kit)	0722152	x	x	x



* Max. Slave stroke refers to possible max. stroke with lever adjusted to largest reach position.

3. SLAVE CYLINDER

In order to ascertain the correct slave cylinder for your motorcycle you will need to cut the template slave cylinder from this page, fit to the motorcycle and cut to size. If you do not feel qualified to remove the clutch cable please seek assistance from your local motorcycle technician.

There are 2 basic forms of slave cylinder attachment:

1. STANDARD cable fitting: Slave template 1

2. REARMOUNT VARIO – Slave template 2

The REARMOUNT VARIO fitting can be adjusted to fit correctly using the rear locknut.



STANDARD template 1

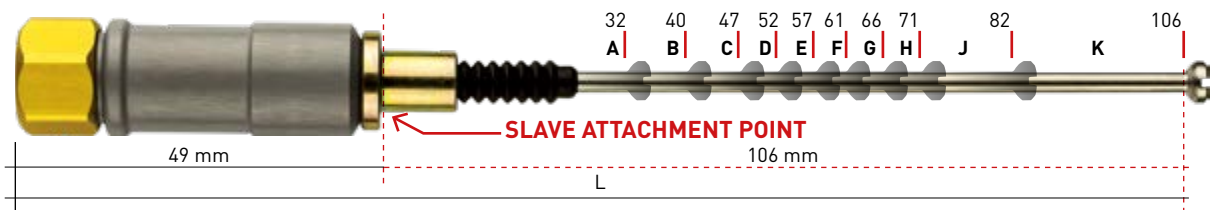


REARMOUNT VARIO template 2

STANDARD

Carefully cut the template out and fit to your motorcycle. The clutch activation arm at the engine should be pushed with your finger as far forward towards the slave cylinder as possible and the template should then be cut at the next longest available point.

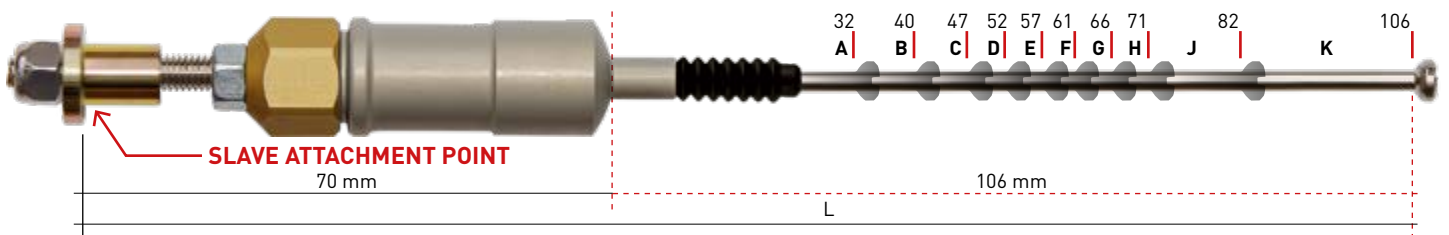
Then compare the number on the template to the list on pages 28/29 to pick the correct slave cylinder. If the slave is too long it can be shortened by placing spacer washers between the slave and the mounting point – if it is too short it will not work correctly. If in doubt choose the longer version.



REARMOUNT VARIO

Carefully cut the template out and fit to your motorcycle. The clutch activation arm at the engine should be pushed with your finger as far forward towards the slave cylinder as possible and the template should then be cut at the next longest available point.

Then compare the number on the template to the list on pages 28/29 to pick the correct slave cylinder – you will also require **ORDER CODE 2100018 REARMOUNT VARIO Kit** to mount the slave from behind. The threaded attachment kit at the rear should allow for sufficient adjustability when installing the slave cylinder.



POSSIBLE SLAVE CYLINDER DEVIATIONS

Some motorcycle models require a large nipple to attach to the clutch activation arm.

Some 2 stroke models have the cable fitted beneath an engine casing and require a special 2 stroke bracket.



ORDER CODE 2701674
Set with 1x 11 mm and 1x 14 mm

RRP 11,95 €



ORDER CODE 2701697
2 Stroke Attachment Kit HYMEC
Includes
Sleeve 15 mm,
Sleeve 12 mm, Spacer,
disc and O-Ring
RRP 26,95 €

BEFORE INSTALLING YOUR NEW HYMEC PLEASE DOWNLOAD THE CURRENT HYMEC-MANUAL FROM OUR WEBSITE! HYMEC DOES NOT AFFECT YOUR VEHICLE REGISTRATION.

MAGURA HAVE BEEN SUPPLYING
PARTS TO BMW MOTORCYCLES ON
EVERY MODEL SINCE 1923.

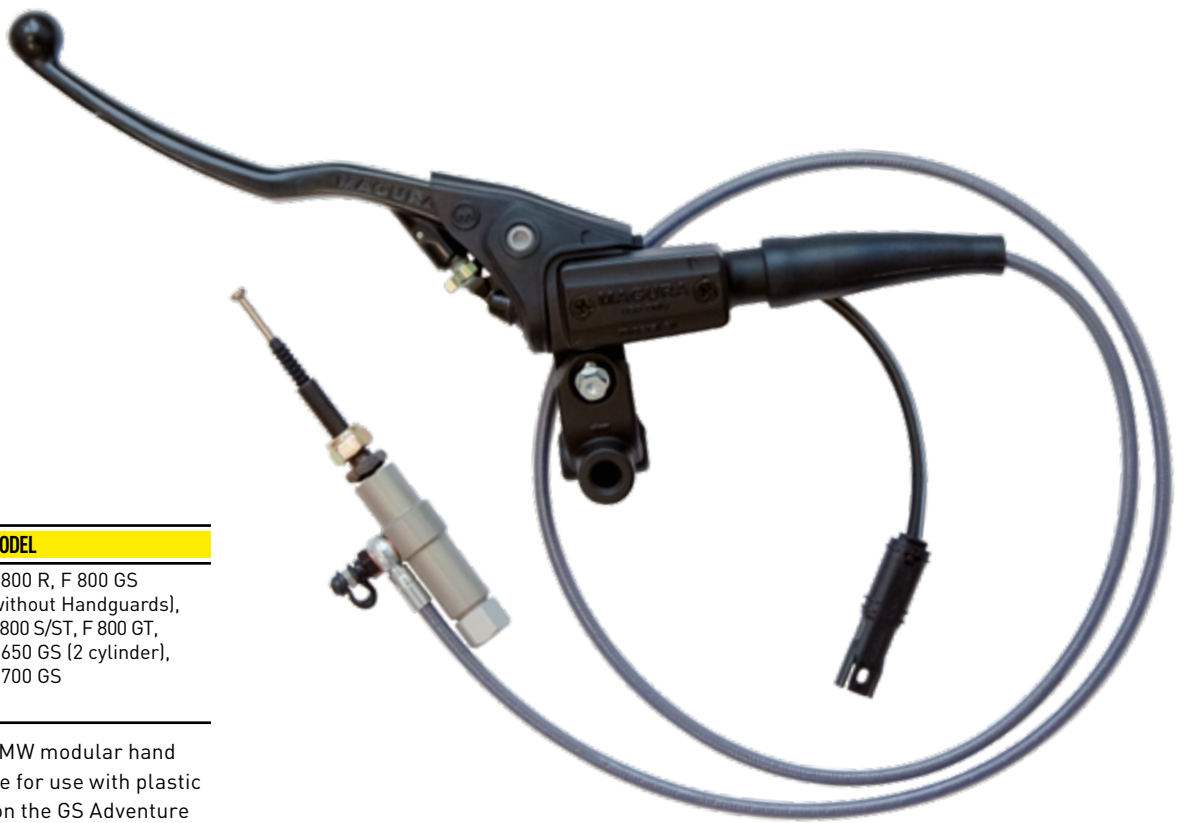
PERFOR- MANCE PARTS

FOR BMW





When it comes to control nobody does it better. The experience of over 90 years flows into our aftermarket products to ensure that an upgrade is just that.



HYMEC FOR F800

ORDER CODE	MODEL
2100021	F 800 R, F 800 GS
SUITABLE FOR ALL MODELS FROM 2006 TO 2015.	(without Handguards), F 800 S/ST, F 800 GT, F 650 GS (2 cylinder), F 700 GS
NOT SUITABLE FOR 2016/17 MODELS.	

Suitable for use with BMW modular hand protectors. Not suitable for use with plastic hand protectors used on the GS Adventure models.



ORDER CODE 2100017

ORDER CODE 2100016

WITH ABE

REPLACEMENT LEVERS FOR BMW MOTORCYCLE.

MAGURA replacement levers represent an improvement on motorcycles since 1923. The ergonomics, material quality and finish are first class. Tested and approved by the TÜV organisation in Germany these levers meet and surpass the highest standards set for master cylinder operation on a motorcycle. Trust MAGURA to offer the best levers for your bike.

MODELL	YEAR	MODELLCODE	CLUTCH LEVER	BRAKE LEVER	RRP
650/700	F 650 GS	2007 - 2012	K72	Not available	2100016 37,45 €
	F 700 GS	2013 - 2015	K72	Not available	2100016 37,45 €
800	F 800 GS/Adv	2007 - 2017	K72	Not available	2100016 37,45 €
	F 800 GT	2012 - 2017	K71	Not available	2100016 37,45 €
	F 800 R	2007 - 2016	K73	Not available	2100016 37,45 €
	F 800 S/ST	2007 - 2010	K71	Not available	2100016 37,45 €
	1200	R 1200 GS/Adv	2003 - 2013	K25	2100017 2100016
	R 1200 R	2006 - 2014	K27	2100017 2100016	je 37,45 €
	R 1200 S	2005 - 2009	K29	2100017 2100016	je 37,45 €
	R 1200 ST	2004 - 2008	K28	2100017 2100016	je 37,45 €
	HP2 Enduro	2005 - 2007	K25HP	2100017 2100016	je 37,45 €
	HP2 Megamoto	2007 - 2010	K25/03	2100017 2100016	je 37,45 €
	HP2 Sport*	2007 - 2010	K29HP	0722112 0722202	je 34,30 €
	K 1200 S	2005 - 2009	K40	2100017 2100016	je 37,45 €
	K 1200 R	2005 - 2009	K43	2100017 2100016	je 37,45 €
	K 1200 R Sport	2005 - 2009	K43	2100017 2100016	je 37,45 €
	K 1200 GT	2005 - 2009	K44	2100017 2100016	je 37,45 €
1300	K 1300 S	2009 - 2015	K40	2100017 2100016	je 37,45 €
	K 1300 R	2009 - 2013	K43	2100017 2100016	je 37,45 €
	K 1300 GT	2009 - 2012	K44	2100017 2100016	je 37,45 €

*This lever is not pictured on this page - please see 195 Radial Master Cylinder (on page 55)



MODEL	YEAR
K1	1988 – 1993
K 1100 RS	1991 – 1996
K 1100 LT	1991 – 1998
R 850 R	1994 – 2001
R 850 GS	1998 – 2000
R 1100 RS	1993 – 2001
R 1100 GS	1994 – 1999
R 1100 R	1994 – 1999
R 1100 RT	1995 – 2001

ORDER CODE 2701122
RRP 54,95 €

REPAIR-KIT 288 (20 MM)

The repair kit 288 is suitable for all 20 mm master cylinders which began production with the first BMW K1 model and were also used in the first 4V 1100cc boxer models up to the introduction of the 1150 range. This kit includes all you require to repair a model 288 master cylinder. Before ordering please ensure that the cylinder is not internally scratched or worn.

APPROVED BY SIMON PAVEY, TOMM WOLF, BMW OFF-ROAD INSTRUCTORS



Suitable for use on:

- R 1200 GS LC
- R 1200 GS LC Adventure
- R 1200 R LC
- R 1200 RT LC
- R 1200 RS
- R nineT

Not suitable for application on models Pure, Racer, Scrambler or Urban G/S



ORDER CODE 2100546
RRP 299,95 €

UPGRADE YOUR BMW WITH MAGURA PERFORMANCE PARTS

The new BMW R-models have established the benchmark in the Adventure-, Touring- and Urban category. How do you improve the best motorcycle controls available? Easy with MAGURA Performance Parts! To celebrate 90 years in the search for perfect control on a motorcycle we have prepared an upgrade kit for your new BMW Motorcycle with two optional elements.

MAGURA Performance Parts will add value to your motorcycle. They are designed to stand the test of time and can be ordered and fitted separately or together as you wish. The materials used are lightweight, extremely durable and strong. Each product contains 90 years of motorcycling know-how combined with our passion for perfection.

Fold Away Lever Kit | Fold levers with position detent lock and reach adjust selector are machined from top grade aluminium. Fully ABE tested and approved.

ORDER CODE 2100547
RRP 199,95 €



CNC Reservoir Cover Kit | Honed from top grade aluminium this kit will add optically to your new BMW. Reservoir breather remains fully functional and an optional fluid level sight glass protector is included just in case you intend to use the bike to cross continents.

MAGURA
HANDLEBARS

X-LINE

4 MM
THE SPECIAL
ONE

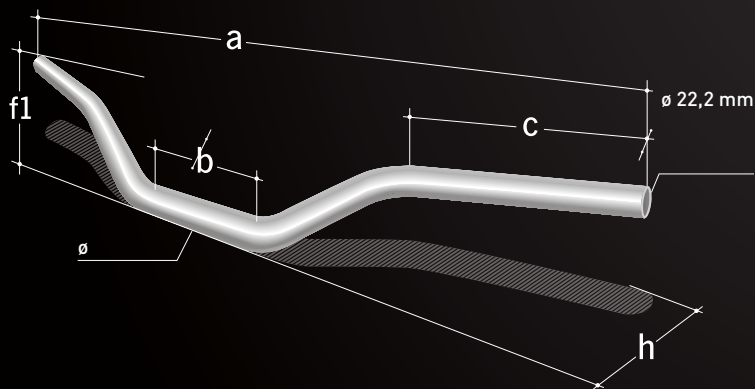




- Light
- Ergonomically designed
- Robust
- Reduced rider fatigue

X-LINE

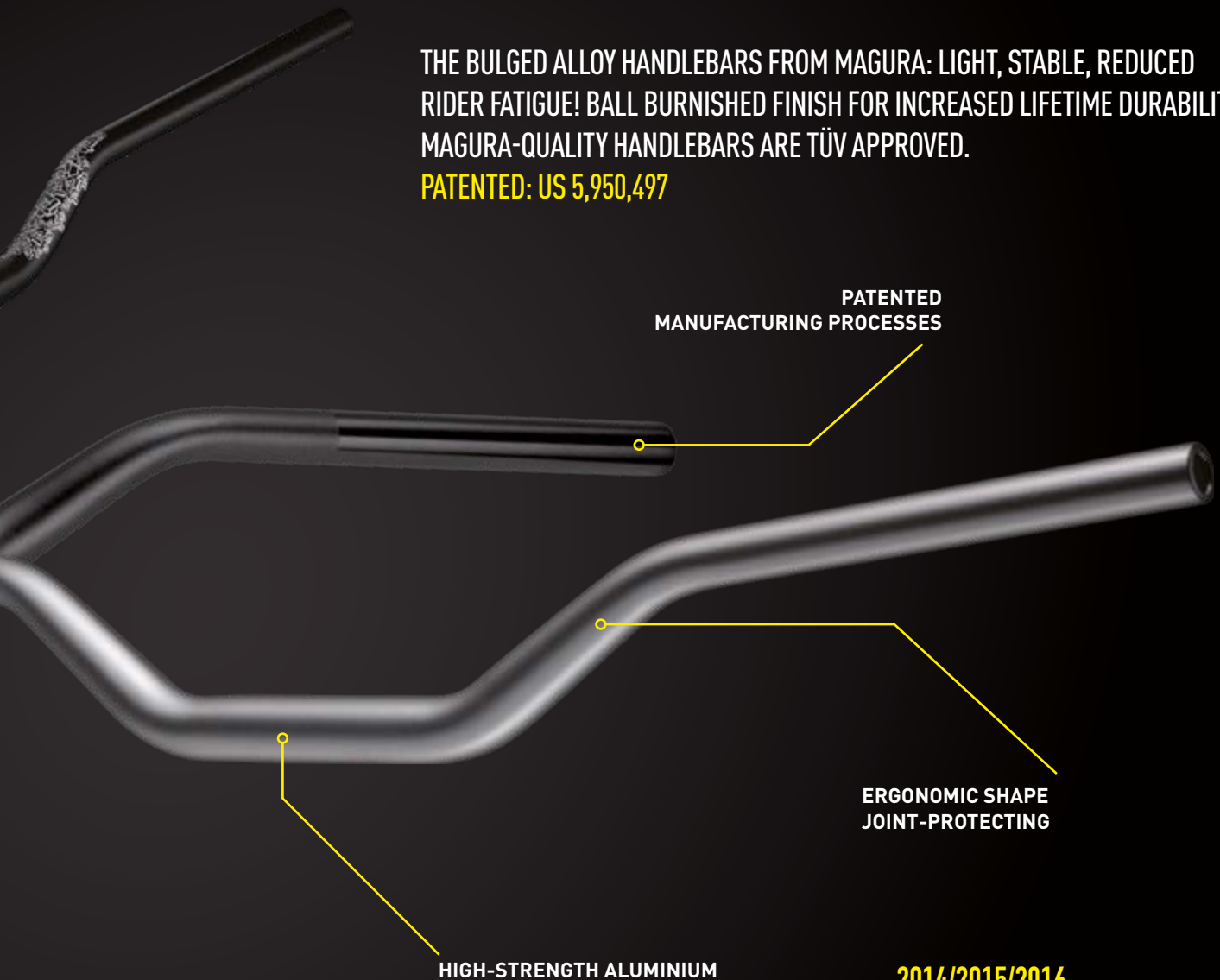
HANDLEBARS



MODEL	COLOUR	DIMENSIONS IN MM						ORDER CODE	RRP
		a	b	c	f1	h	Ø		
AX2 Big-Enduro Handlebar	Silver	827	134	230	206	100	28,6	0723198	146,15 €
MX2 Motocross, Supermoto	Silver	808	135	189	119	77	28,6	0721245	119,65 €
CX »Street«	Silver	805	135	200	117	76	28,6	0723050	119,65 €
EX Enduro	Silver	795	135	186	120	87	28,6	0721053	119,65 €
SX Supercross, Supermoto, Motocross	Silver	808	135	189	120	63	28,6	0721055	119,65 €
TX Touring	Black	797	139	217	138	97	28,6	0723248	121,70 €
FX Streetfighter	Black	750	137	210	98	107	28,6	0723247	121,70 €
SX »Street«	Black	808	135	189	120	63	28,6	0723221	119,65 €
CPX - Chris Pfeiffer Edition	Black	797	131	231	113	76	28,6	0723283	121,70 €
RBX - Rok Bagoros Edition*	Black	792	116	231	112	74	26	2701776	129,95 €

* Clamp Diameter 26 mm. Only suitable for KTM Duke models with 26 mm handlebar clamp dimension.

THE BULGED ALLOY HANDLEBARS FROM MAGURA: LIGHT, STABLE, REDUCED RIDER FATIGUE! BALL BURNISHED FINISH FOR INCREASED LIFETIME DURABILITY. MAGURA-QUALITY HANDLEBARS ARE TÜV APPROVED.
PATENTED: US 5,950,497



2014/2015/2016
TECHNICAL PARTNER
TEAM HRC DAKAR -
HANDLEBAR SUPPLIER

ACCESSORIES



X-line fork clamp kit for bikes with split clamp. Screw M 10 x 70, with bushings.

OFF-ROAD

ORDER CODE
 0720474
 RRP 55,64 €



X-line clamp kit for one piece clamp/fork bridges. Fits HONDA, YAMAHA, SUZUKI etc., hole distance 32-36 mm. Allows fitment of 28,6 mm tapered handlebar into a standard 22 mm clamp.

OFF-ROAD

ORDER CODE
 0720488
 RRP 55,64 €



MAGURA-Barpad, black

OFF-ROAD

ORDER CODE
 0723058
 RRP 27,05 €



Black X-line "Street" clamp kit for bikes with split clamp (complete). Screw M 10 x 70, with bushings.

ON-ROAD

ORDER CODE
 0723270
 RRP 109,25 €



Black X-line "Street" clamp kit for 22 mm clamp conversion, clamping range 32-36 mm. Allows fitment of 28,6 mm tapered handlebar into a standard 22 mm clamp.

ON-ROAD

ORDER CODE
 0723271
 RRP 121,70 €

SPARE PARTS
FOR OLDTIMER
AND CLASSIC
BIKES

CLASSICS

90 YEARS
OF TRADITION







73 SPORT BRAKE LEVER

Sport brake lever for mechanical brakes (drum brakes). Light weight forged alloy black split perch clamp and polished Eurostyle ball-end blade, 160 mm long, Ø 8.2 mm hole for rearview mirror.

MODEL	DESCRIPTION/APPLICATION	ACCESSORIES	ORDER CODE	RRP
B-lever 73.2	Thread 1/4" for brake light switch (0128496)	Nipple barrel, solder nipple, adjusting screw and protective cap	0116933	48,45 €

Technical data: Cable pull 20 mm | thread M7 for adjusting screw



73.202 SPORT BRAKE LEVER DUAL PULL

Sport brake lever for mechanical brakes (twin drum brakes). Light weight forged black split perch clamp and polished ball-end lever, 160 mm long, Ø 8.2 mm hole for rearview mirror.

MODEL	DESCRIPTION/APPLICATION	ACCESSORIES	ORDER CODE	RRP
B-lever 73.202	Dual-cable pull, with equalizer, to operate two drum brakes	Soldernippel	0116934	99,95 €

Technical data: Cable pull 20 mm | thread M7 for adjusting screw



74 SPORT CLUTCH LEVER

Sport clutch lever, light weight forged alloy black split perch clamp and polished, Eurostyle ball-end blade, 160 mm long, Ø 8.2 mm hole for rearview mirror

MODEL	DESCRIPTION/APPLICATION	ACCESSORIES	ORDER CODE	RRP
C-lever4.1	Cable pull 20 mm at 3.9 ratio, HUSQVARNA, KTM, MAICO etc.	Nipple barrel, solder nippel, adjusting screw and protective cap	0116940	48,45 €

Technical data: Cable pull 20 mm | lefthand thread M7 for cable adjusting screw



PROTECTION CAP SET

Protection cap set for 73 Sport brake lever and 74 Sport clutch lever

MODEL	DESCRIPTION/APPLICATION	ORDER CODE	RRP
Protection cap set 73/516 ksz	Protection cap set for 73 Sport brake lever and 74 Sport clutch lever	0735083	11,90 €



101 CLUTCH LEVER

Clutch lever with clamp for tube-Ø 22 mm, with thread M6 for adjusting screw or supporting hole Ø 6.5 mm for cable.

MODEL	DESCRIPTION/APPLICATION	ACCESSORIES	ORDER CODE	RRP
C-lever 101.2.9	Black shank with thread for adjusting screw, black fibre reinforced lever blade, SPARTA	Adjusting screw, barrel, nipple	0117380	23,95 €
C-lever 101.4.8	Black shank with thread for adjusting screw, polished aluminium lever blade with stop notch	Barrel, nipple, s-nipple	0117421	30,45 €
C-lever 101.7.9	Black shank with supporting hole and thread for switch, black fibre reinforced lever blade with pull back spring, PUCH, TOMOS	Barrel, nipple	0117496	23,95 €
C-lever 101.8.9	Black shank with thread M 6 and thread for switch, black fibre reinforced lever blade with pull back spring	Adjusting screw, barrel, nipple	0117514	26,95 €

Technical data: Cable pull | 18 mm, length of lever blade 125 mm, blade with ball end Ø 18 mm



108 BRAKE LEVER

Brake lever righthand for tube-Ø 22 mm, cable supporting hole, alloy lever blade or reinforced fibre lever blade.

MODEL	DESCRIPTION/APPLICATION	ORDER CODE	RRP
B-lever 108.4.9	Righthand, black fibre reinforced lever blade, thread for brake light switch, pull back spring, supporting hole	0119570	26,95 €

Technical data: Cable pull | 18 mm



DECOMPRESSION LEVER

Decompression lever, shank Ø 22 mm with supporting hole Ø 6.7 mm, cable fixing with clamp screw, cable pull 16 mm.

MODEL	DESCRIPTION/APPLICATION	ORDER CODE	RRP
Lever 12	Decompression lever, shank Ø 22 mm with supporting hole Ø 6.7 mm, cable fixing with clamp screw	0111370	22,80 €

Technical data: Cable pull | 16 mm



225 HYDRAULIC BRAKE AND CLUTCH LEVER

Features and benefits

Hydraulic brake and clutch lever, black painted housing with a (22 mm) clamp, polished alloy lever, thread for brake light switch and hole Ø 8.1 mm or thread M8 for rear-view mirror, thread M10 x1, plastic brake fluid reservoir. Obtainable as righthand and lefthand model. Fitting brake and clutch switch see page 61

MODEL	PISTON Ø IN MM	DESCRIPTION/APPLICATION	ORDER CODE	RRP
BRAKE				
B-lever 225.2	13	Polished lever, hole-Ø 8.1 mm for mirror	0122000	123,95 €
B-lever 225.4	16	Polished lever, hole-Ø 8.1 mm for mirror	0122020	123,95 €
CLUTCH				
C-lever 225.52	13	Polished lever, hole-Ø 8.1 mm for mirror	0122110	123,95 €
C-lever 225.54	16	Polished lever, hole-Ø 8.1 mm for mirror	0122130	123,95 €

Technical data: Stroke | 12 mm



THROTTLE TWIST GRIP WITH MECHANICAL BRAKE 233

Single cable pulley throttle grip with mechanical brake lever. The throttle cable guide is open to enable external cable attachment. Folded and polished alloy lever.

MODEL	DESCRIPTION/APPLICATION	ACCESSORIES	ORDER CODE	RRP
Throttle twist grip 233.2.8	Housing painted black, grip black, folded and polished alloy lever. Suitable for Batavus, Hercules, Kreidler, Puch and Zündapp models.	Barrel, nipple and solder nipple	2100541	46,95 €

Technical Data: Cable pull | throttle 22 mm at a rotation of 75°, brake 18 mm



273 THROTTLE TWIST GRIP WITH MECHANIC BRAKE

Straight pulley throttle twist grip with brake lever blade, one cable pull (possibility for outer attachment), black painted housing with supporting hole Ø 6.5 mm or adjusting screw for cable, polished alloy lever or fibre reinforced lever blade with or without pull back spring, sliding clamp for screwing or for solder nipple.

MODEL	DESCRIPTION/APPLICATION	ACCESSORIES	ORDER CODE	RRP
Throttle twist grip 273.6.8	Black housing with thread for brake light switch, sliding clamp, PUCH	Barrel, nipple	0123953	72,45 €
Throttle twist grip 273.6.8	As above, but without accessories	-	0123954	68,95 €

Technical data: Cable pull | throttle 21 mm at a rotation of 104°, brake 18 mm



307 THROTTLE TWIST GRIP

Outer pulley throttle twist grip, single cable pull, straight cable up to 38 mm stroke, polished aluminium housing with trap door cover and adjusting screw for twist regulation, cable protection cover.

MODEL	DESCRIPTION/APPLICATION/VERWENDUNG	ACCESSORIES	ORDER CODE	RRP
Throttle twist grip 307.1	For general using	Solder nipple, grub screw, cable protection cover	0125600 B	91,95 €

Technical data: Total stroke | 46 mm at a rotation of 115° for handlebars Ø 22 mm and 7/8"



309 THROTTLE TWIST GRIP

Throttle twist grip, one cable pull, with big rotation, two part housing of reinforced poly-carbon, protective sleeve.

MODEL	DESCRIPTION/APPLICATION	ACCESSORIES	ORDER CODE	RRP
Throttle twist grip 309.1	With grip "Street", SIMSON, SACHS, KTM, ZÜNDAPP	Cable support, cap, solder nipple	0126003	39,95 €

Technical data: Total stroke | 50 mm at a rotation of 213°



314 THROTTLE TWIST GRIP

Motocross throttle twist grip with single cable, parallel pull. DUO-settings (Motocross or Enduro). Cable routed over roller for ease of pull. Black reinforced poly carbon housing, pro-grid rubber grip, quick and easy cable change, without removing housing. Can be changed to enduro setting.

MODEL	DESCRIPTION/APPLICATION	ACCESSORIES	ORDER CODE	RRP
Throttle twist grip set 314/029	In Motocross setting, with matching left grip	Solder nipple, rubber cable cover	0730218	56,00 €
Throttle twist 314	In Motocross setting without matching left grip	Solder nipple, rubber cable cover	0126386	47,95 €

Technical data: Total stroke | 48 mm at a rotation of 103°/91°

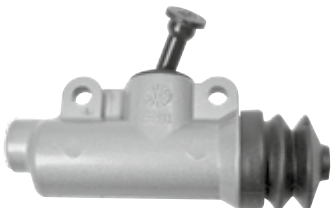


317 ELECTRIC THROTTLE TWIST GRIP

Housing made of glass-fibre reinforced plastics for tube-Ø 22 mm. Overall length 150 mm, max. current-carrying capacity 1 Watt, resistor and range of control of the potentiometer see below. Outer diameter of connection cable-Ø 6 mm, cable up to 3 seeses.

MODEL	DESCRIPTION/APPLICATION	ORDER CODE.	RRP
Throttle twist grip/ Poti 317.2	5 kOhm-potentiometer, working rate 0-5 kOhm, cable length 800 mm	0026471	65,50 €
Throttle twist grip/ Poti 317.4	5 kOhm-potentiometer, working rate 0-5 kOhm, cable length 1800 mm	2101014	65,50 €
Throttle twist grip/ Poti317.9	5 kOhm-potentiometer, working rate 0-5 kOhm, cable length 225 mm, with Molex-plug, for MuZ-Scooter "Charly"	2101015	65,50 €

Technical data: Rotation angle 75°



700 MASTER BRAKE CYLINDER

Master brake cylinder for foot controlled rear disc brakes, tubing fitting M 10x1 to the brake calliper, without brake fluid reservoir, fitting for tubing connection to an external brake fluid reservoir.

MODEL	PISTON Ø IN MM	DESCRIPTION/APPLICATION	ORDER CODE	RRP
Master brake cylinder 700.33	16	Chrome painted housing, EML, KTM	0131411	140,45 €

Technical data: Stroke | 12 mm

SPARE PARTS AND
ACCESSORIES

SPARE PARTS

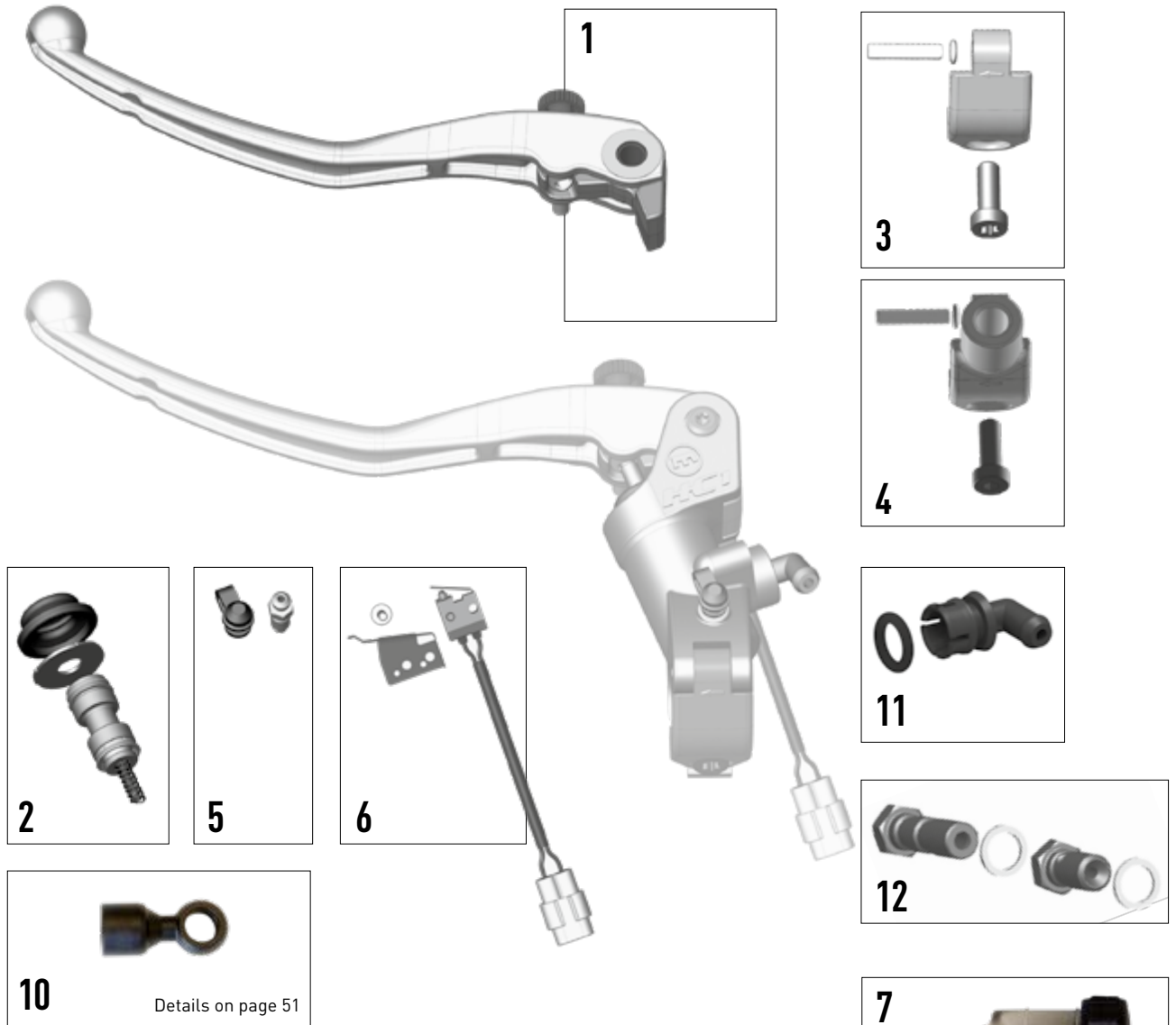
100%
PERFORMANCE



- 100% performance
- 100% precise fitment
- 100% flexible
- 100% MAGURA-quality



HC' CLUTCH MASTER



10 Details on page 51

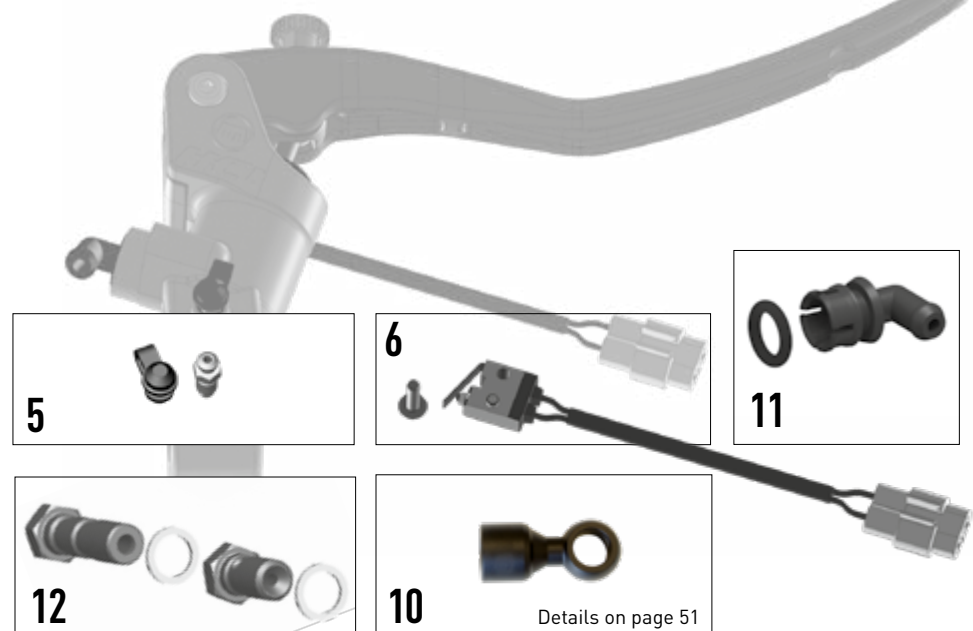
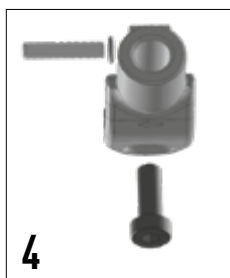
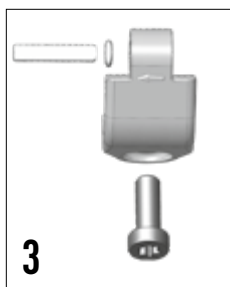
POSITION	DESCRIPTION/APPLICATION	ORDER CODE	RRP
1	Clutch lever assembly large L = 180 mm	2701156	34,30 €
	Piston kit Ø12 mineral oil	0723234	33,30 €
	Piston kit Ø13 mineral oil	0722110	33,30 €
2	Piston kit Ø12 DOT	0722211	33,30 €
	Piston kit Ø13 DOT	0722210	33,30 €
	Piston kit Ø16 DOT	0722209	33,30 €
3	Mounting bracket	2701161	12,45 €
4	Mirror mounting bracket M10 x 1,25	2701162	22,30 €
5	Bleeding valve M5 x 0,8	0722214	12,45 €
6	Start safety switch	2701168	31,20 €
7	Clutch reservoir 9 ml flange mount for mineral oil (compatible with HYMEC)	2700787	36,50 €
8	Clutch reservoir 9 ml remote mount for mineral oil	2700492	41,20 €
9	Clutch reservoir 9 ml remote mount for DOT	2700491	41,20 €
10	Radial Pressure Line Adapter Adapter converts banjo ring from axial to radial connection avoiding the requirement for a new brake or clutch pressure line. Suitable for brake and clutch applications Suitable for application with MAGURA HYMEC pressure lines	2700499	36,05 €
11	Stutzen mit O-Ring für DOT	2701678	12,95 €
	Stutzen mit O-Ring für Mineralöl	2701677	12,95 €
12	Hohlschraube M10 x 1	0721786	10,80 €
	Doppel-Hohlschraube M10 x 1 Beinhaltet Dichtringe	0721789	10,80 €



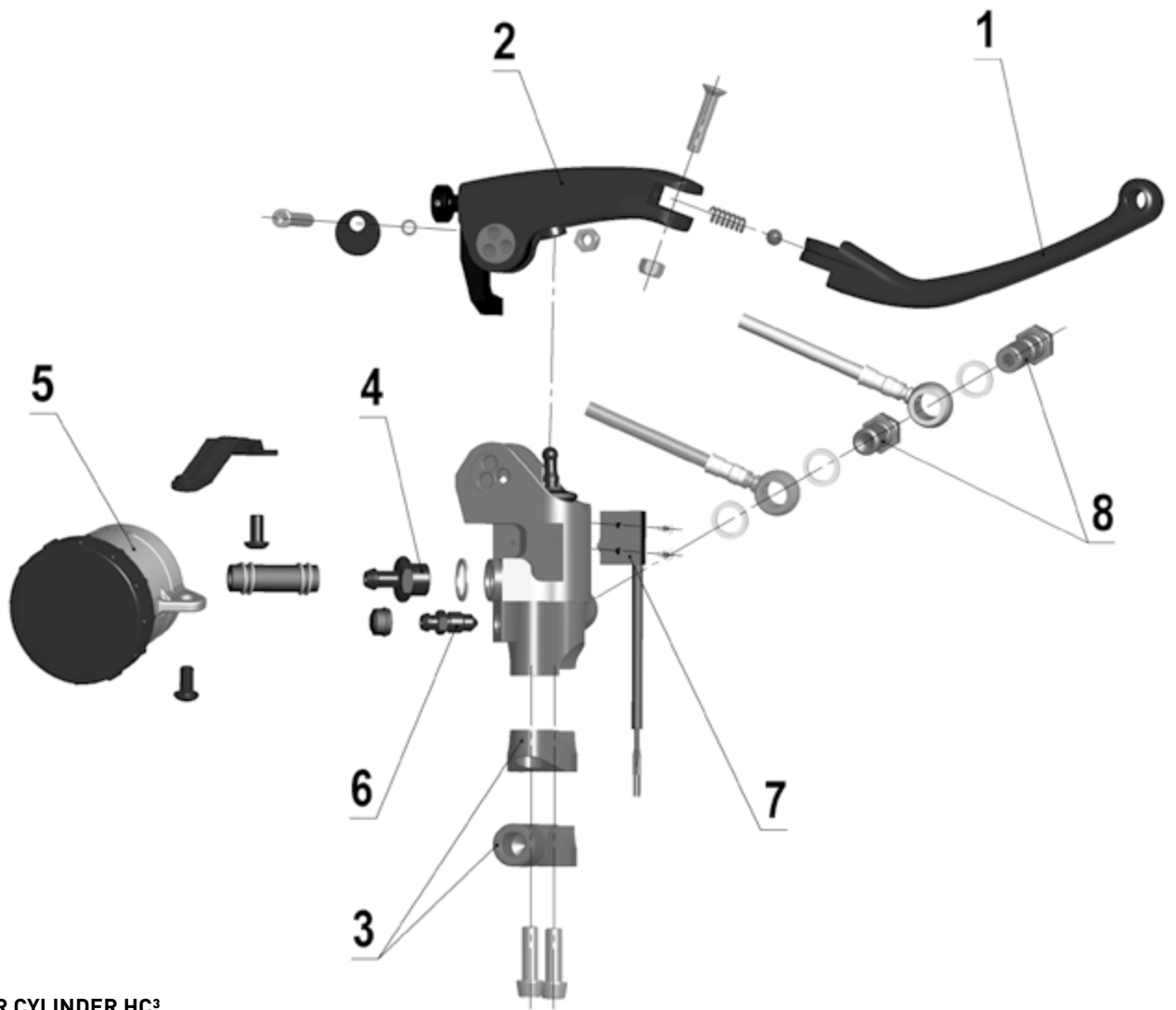
SERVICE

To obtain the full performance from your HC master you will need to return it to MAGURA or to a certified service partner to have it serviced. We recommend a service every 100,000 km or 10 years.

HC¹ BRAKE MASTER

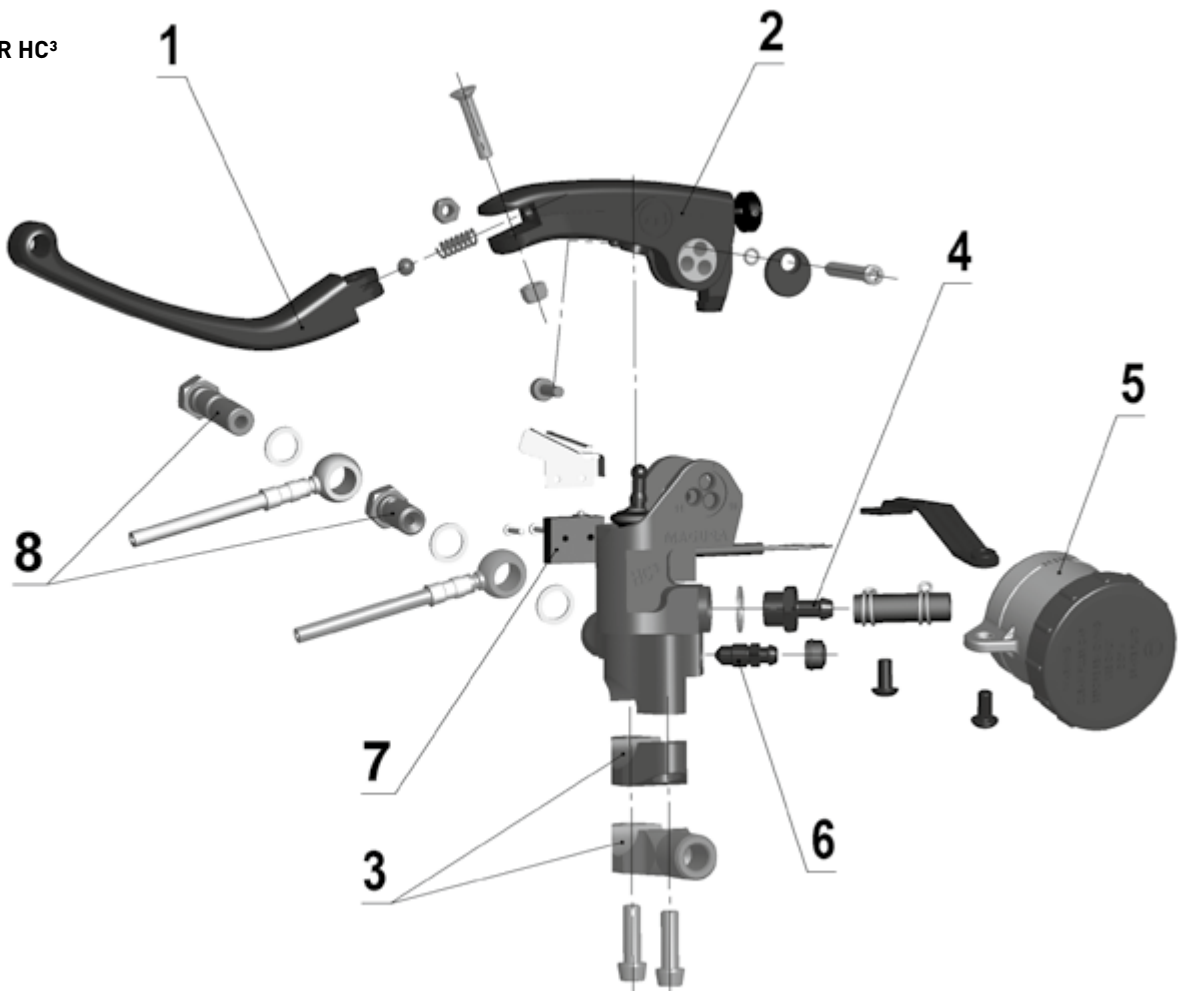


POSITION	DESCRIPTION/APPLICATION	ORDER CODE	RRP
1	Brake lever assembly large L = 180 mm	2701157	34,30 €
2	Brake lever assembly large L = 155 mm	2701158	34,30 €
3	Mounting bracket	2701161	12,45 €
4	Mirror mounting bracket M10 x 1,25	2701162	22,30 €
5	Bleeding valve M5 x 0,8	0722214	12,45 €
6	Brake light switch	0722213	30,70 €
7	Brake reservoir 16 ml flange mount for single calliper brake systems	2700786	36,50 €
8	Brake reservoir 36 ml remote mount for double calliper brake systems	2700488	41,20 €
9	Brake reservoir 9 ml remote mount for single calliper brake systems	2700490	41,20 €
10	Radial Pressure Line Adapter Adapter converts banjo ring from axial to radial connection avoiding the requirement for a new brake or clutch pressure line. Suitable for brake and clutch applications Suitable for application with MAGURA HYMEC pressure lines	2700499	36,05 €
11	Socket with O-Ring for DOT	2701678	12,95 €
	Banjo Connector M10 x 1	0721786	10,80 €
12	Double Banjo Connector M10 x 1 Includes gasket washers	0721789	10,80 €



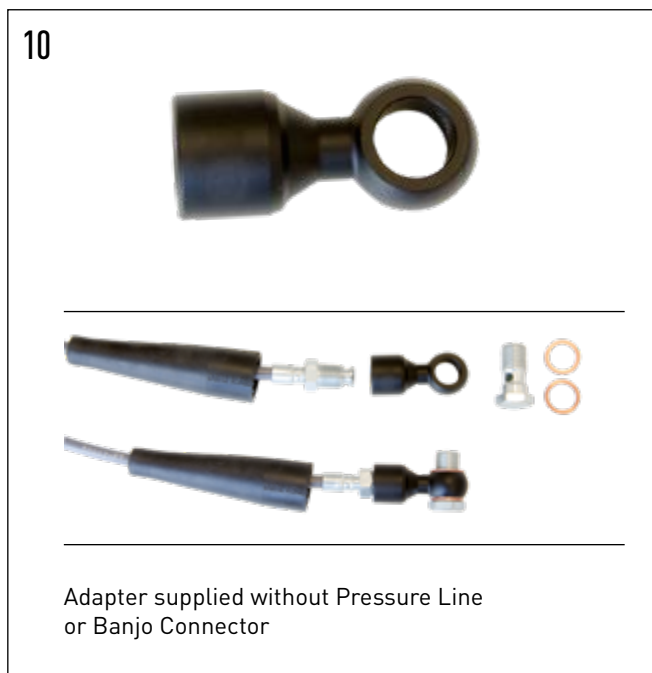
**BRAKE
MASTER CYLINDER HC³**

**CLUTCH
MASTER CYLINDER HC³**



SERVICE

To obtain the full performance from your HC master you will need to return it to MAGURA or to a certified service partner to have it serviced. We recommend a service every 100,000 km or 10 years.



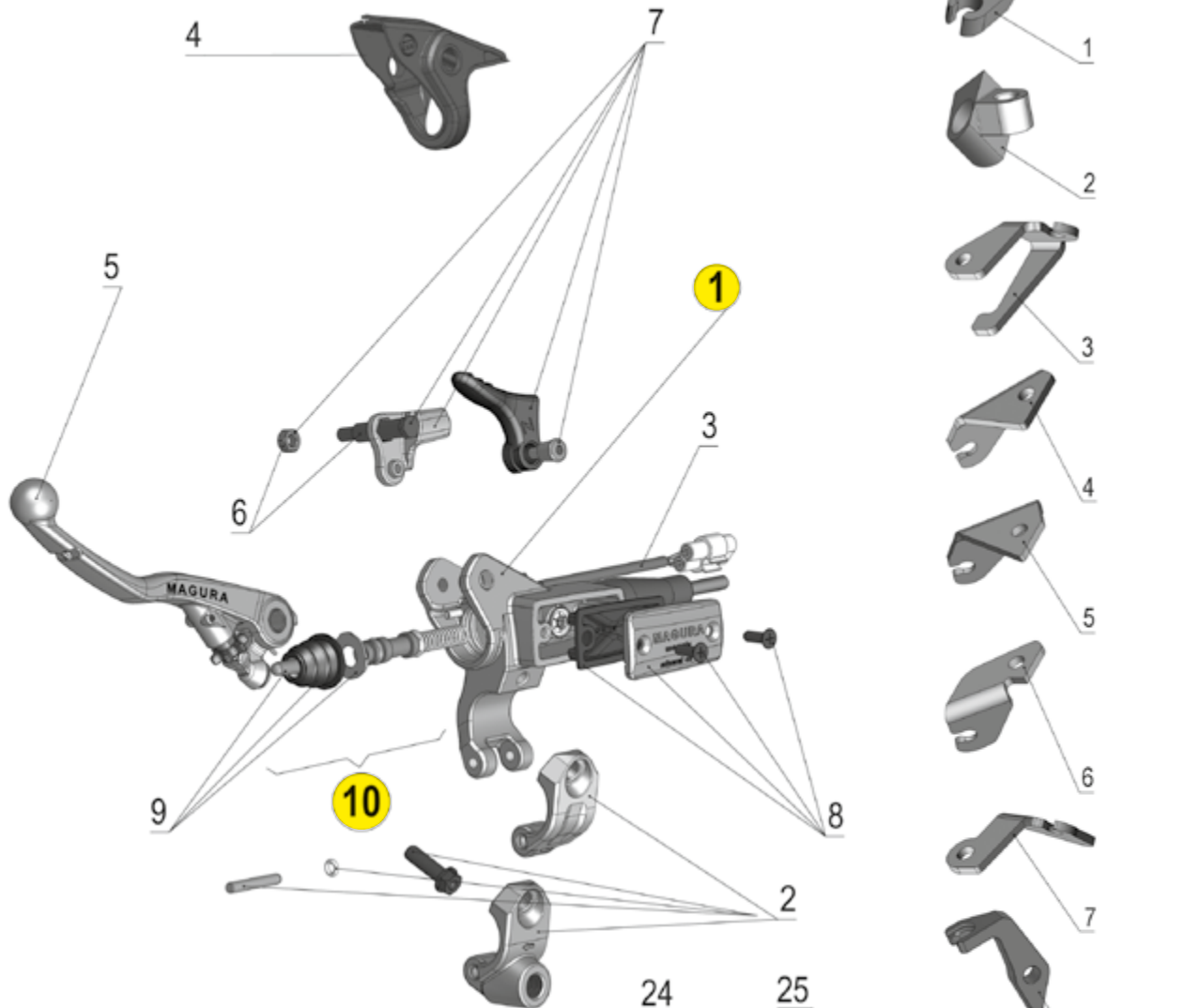
Adapter supplied without Pressure Line or Banjo Connector



HC³ | OPTIONAL AND SPARE PARTS

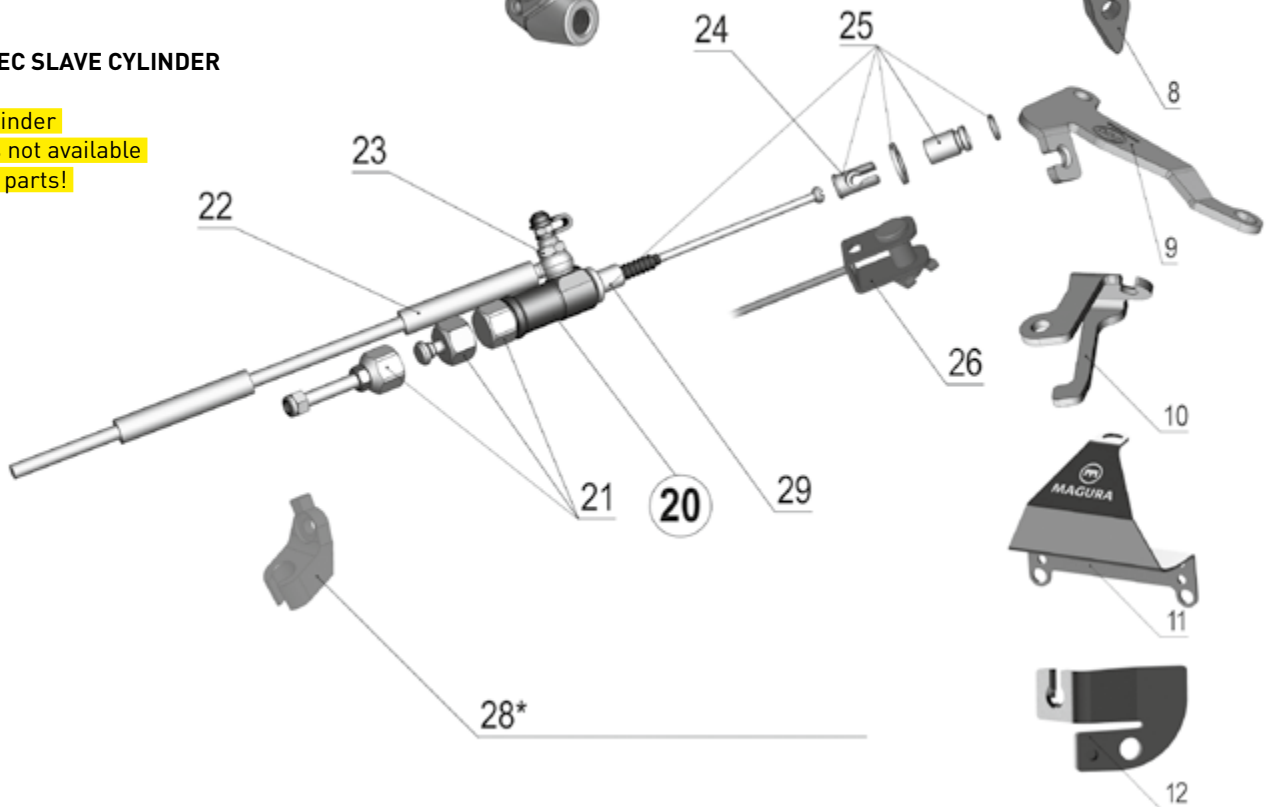
POSITION	DESCRIPTION/APPLICATION	ORDER CODE	RRP
1	Folding Lever Blade long L = 193 mm	2700493	128,75 €
	Folding Lever Blade short L = 165 mm Includes retaining bolt, nut, spring and ball	2700494	
2	Lever Base – Brake	2700496	206,00 €
	Lever Base – Clutch Includes reach adjust, bracket, piston activation rod, bellows and titanium lever securing bolt with self locking nut and o-ring	2700495	206,00 €
3	Clamp	2700484	77,25 €
	Mirror Clamp	2701393	77,25 €
	Mirror Clamp Gold M10 x 1,25	2700485	97,85 €
	Mirror Clamp Black M10 x 1,25 Includes 2 titanium clamp screws	2701392	97,85 €
4	Reservoir Connector Includes gasket washer	2700486	20,50 €
5	Reservoir Radial HC Brake 36 ml	2700488	41,20 €
	Reservoir Radial HC Brake 9 ml	2700490	41,20 €
	Reservoir Radial HC Clutch 9 ml DOT	2700491	41,20 €
	Reservoir Radial HC Clutch 9 ml Mineral Oil Suitable for use with HC ¹ , HC ³ and Radial 195. Includes hose, security hose clamp (x2), retaining bracket and bolts.	2700492	41,20 €
6	Bleed Nipple Includes dust cover	0720527	8,30 €
7	Switch-Kit Brake	0722213	30,70 €
	Switch-Kit Clutch Includes retaining bolts	2700487	41,20 €
8	Banjo Connector M10 x 1	0721786	10,80 €
	Double Banjo Connector M10 x 1 Includes gasket washers	0721789	10,80 €
9	Remote Brake Lever Adjuster On the fly lever reach adjustment for race track use.	2700497	87,55 €
10	Radial Pressure Line Adapter Adapter converts banjo ring from axial to radial connection avoiding the requirement for a new brake or clutch pressure line. Suitable for brake and clutch applications Suitable for application with MAGURA HYMEC pressure lines	2700499	36,05 €

167 HYMEC MASTER CYLINDER



167 HYMEC SLAVE CYLINDER

Slave cylinder seal-kits not available as spare parts!

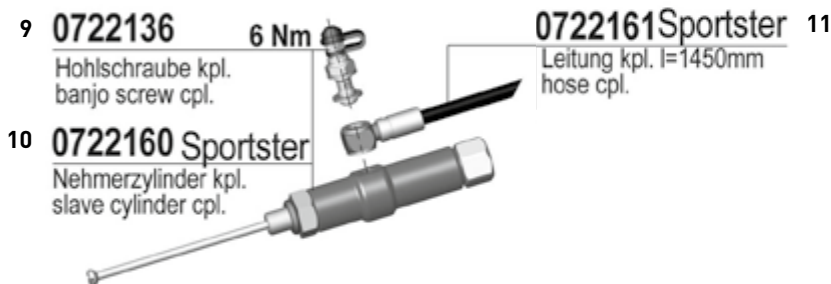
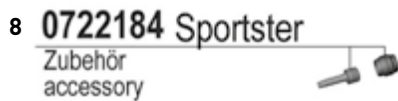
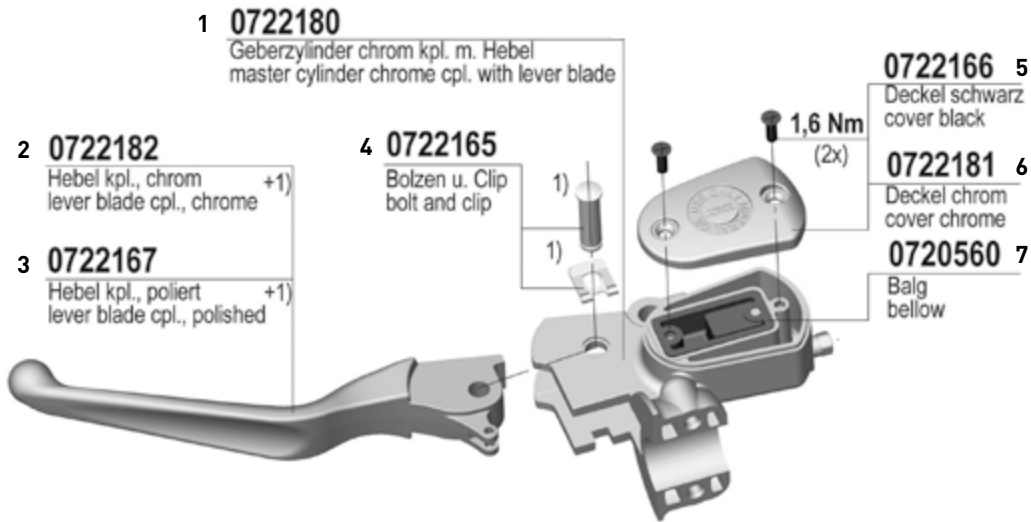


167 HYMEC SPARE PARTS

POSITION	MODEL	ORDER CODE	RRP
1	Master cylinder*	Page 22/23	
2	Clamp black	2700176	15,60 €
	Clamp black for threaded mirror mount M10 x 1.25 mm	2700177	20,80 €
	Clamp black for threaded mirror mount M10 x 1.5mm (BMW F 800 HYMEC) All supplied with fitting pin and retaining bolt	2700385	20,55 €
3	Clutch switch	0723187	41,60 €
	Clutch switch BMW F 800 HYMEC	2700384	41,20 €
4	Protection cover for lever without choke lever	0723163	10,90 €
	Protection cover for lever with choke lever	0723202	10,90 €
5	Lever Off-Road clutch silver long L = 146 mm	0723290	33,30 €
	Lever Off-Road clutch silver short L = 123 mm	0723121	33,30 €
	Lever Street clutch black L = 163 mm	0723296	36,40 €
	Lever Street clutch silver L = 163 mm	2700244	36,40 €
6	Screw for lever without deco	0723115	5,15 €
7	Deco lever black	0723189	17,65 €
	Hot start lever red	0723188	17,65 €
8	Reservoir cover for mineral oil use with bellow and screws	2700501	18,50 €
	Reservoir cover for DOT use with bellow and screws	2700215	18,50 €
9	Bellows with push rod and washer	0723116	5,70 €
10	Master piston-Ø 9,5 mm mineral oil	0723184	33,30 €
	10,5 mm mineral oil	0723185	33,30 €
	12 mm mineral oil	2700489	36,05 €
20	Slave cylinder	Seite 28/29	
21	HYMEC slave rear cap kit includes STANDARD, REARMOUNT and REARMOUNT VARIO cap options	2100018	29,95 €
22	Pressure line kit CARBON with accessories L = 1.120 mm	0722137	34,85 €
	Pressure line kit CARBON with accessories L = 1.045 mm	0722138	34,85 €
	Pressure line kit ARAMID (cut to size) with accessories L = 1.500 mm	0722679	30,70 €
23	Banjo bolt with bleeding valve for carbon tubings M 6x16.5 mm	0722136	26,00 €
24	Nipple Adapter Kit includes 11 and 14 mm attachment nipple adapter	2701674	11,95 €
25	HYMEC- Slave attachment kit includes 12 and 15 mm 2-stroke adapter sleeve with o-ring, spacer washer and nipple adapter.	2701697	26,95 €
26	Clutch activation arm adapter (suitable for Suzuki motorcycles)	2701695	34,95 €
28	1. Mounting adapter Suzuki RM-Z 250, Model year 2004-2008	2701682	44,95 €
	1. Mounting adapter Kawasaki KXF 250, Model year 2004-2008	2701682	44,95 €
	2. Mounting adapter Honda CRF 450 R, Model year 2004	2701681	44,95 €
	3. Mounting adapter Kawasaki KX 450 F, Model year 2006	2701685	29,95 €
	4. Mounting adapter Honda CRF 450 R, Model year 2004-2009	2701686	29,95 €
	5. Mounting adapter Suzuki RM-Z 250, ab Model year 2009	2701683	29,95 €
	6. Mounting adapter Suzuki RM-Z 450, ab Model year 2009	2701684	29,95 €
	7. Mounting adapter Kawasaki KX 450 F, ab Model year 2009	2701687	44,95 €
	8. Mounting adapter Honda CRF 250 F, ab Model year 2014	2701690	29,95 €
	9. Mounting adapter Honda CRF 450 R, Model year 2015	2701692	29,95 €
	10. Mounting adapter Kawasaki KX 450 F, Model year 2015	2701691	29,95 €
	11. Slave Protection Kawasaki KX 450 R, ab Modeljahr 2016	2701694	44,95 €
12. Mounting adapter Honda CRF 450 R, Model year 2017	2701696	29,95 €	
30	MAGURA-Blood 100 ml - F/NL	2700818	9,35 €
	MAGURA-Blood 1 l - F/NL	2700819	45,75 €
	MAGURA-Blood 100 ml - D/E	0721820	9,35 €
	MAGURA-Blood 1l - D/E	0721821	45,75 €
31	Service-Kit HYMEC	0722152	22,65 €



HYMEC FOR HARLEY



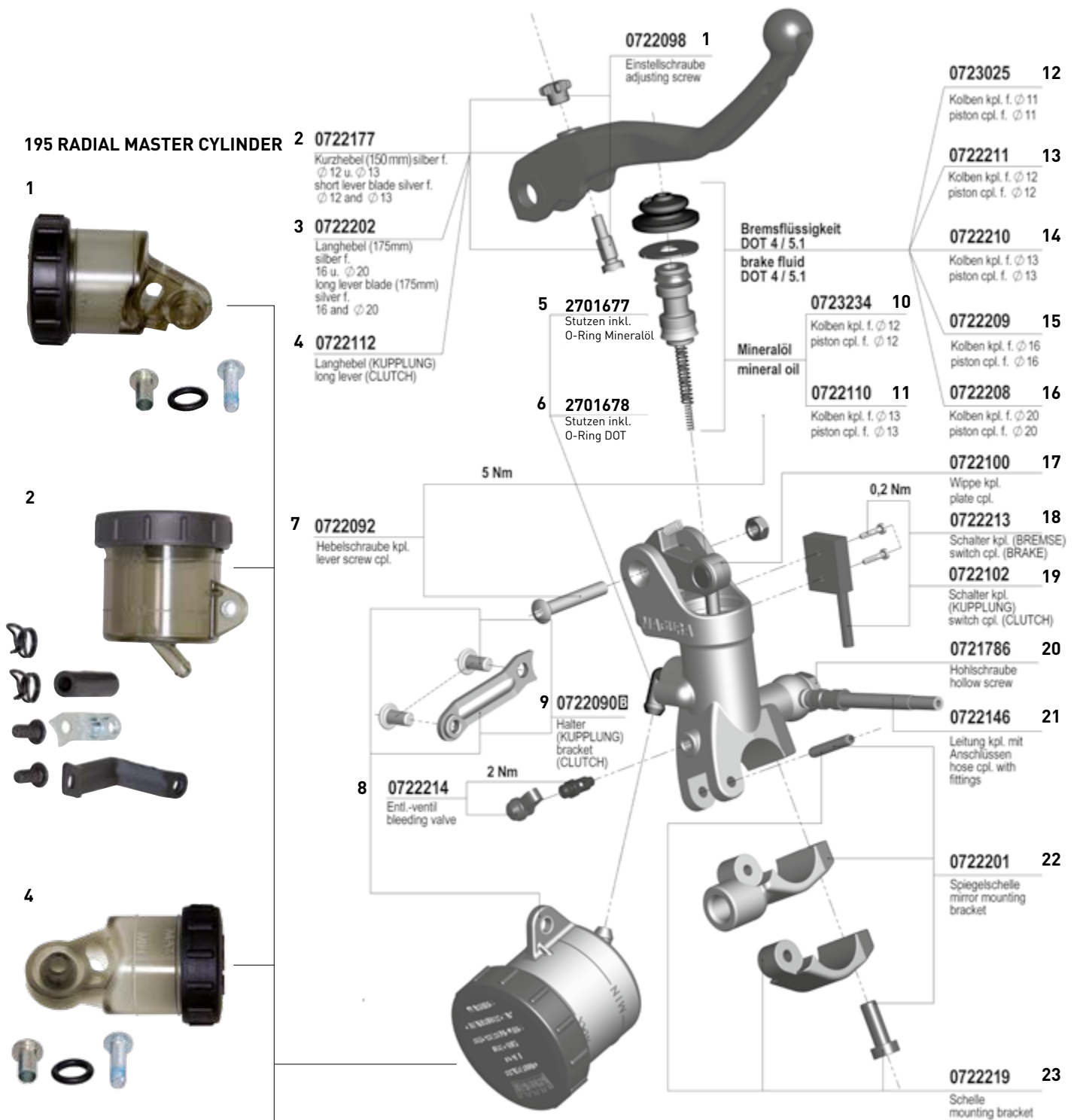
POSITION	RRP
----------	-----

HYMEC

1	307,45 €
2	77,25 €
3	41,20 €
4	12,35 €
5	22,65 €
6	49,40 €
7	7,25 €
8	8,50 €
9	26,00 €
10	123,60 €
11	46,35 €

RADIAL GEBERZYLINDER

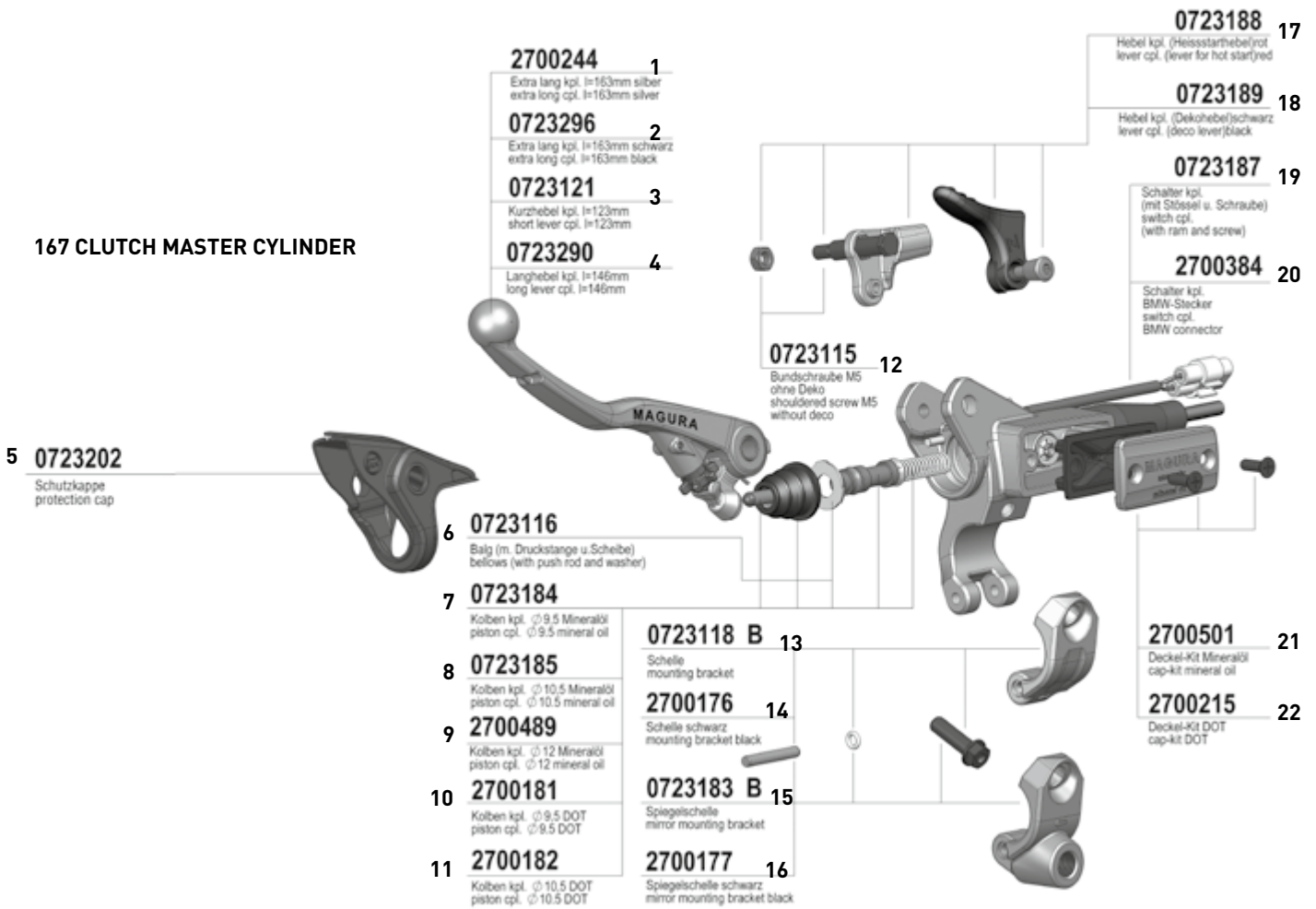
1	9,35 €
2	34,30 €
3	34,30 €
4	34,30 €
5	12,95 €
6	12,95 €
7	6,20 €
8	12,45 €
9	14,55 €
10	33,30 €
11	33,30 €
12	33,30 €
13	33,30 €
14	33,30 €
15	33,30 €
16	33,30 €
17	20,80 €
18	30,70 €
19	31,20 €
20	10,80 €
21	84,25 €
22	17,15 €
23	12,45 €



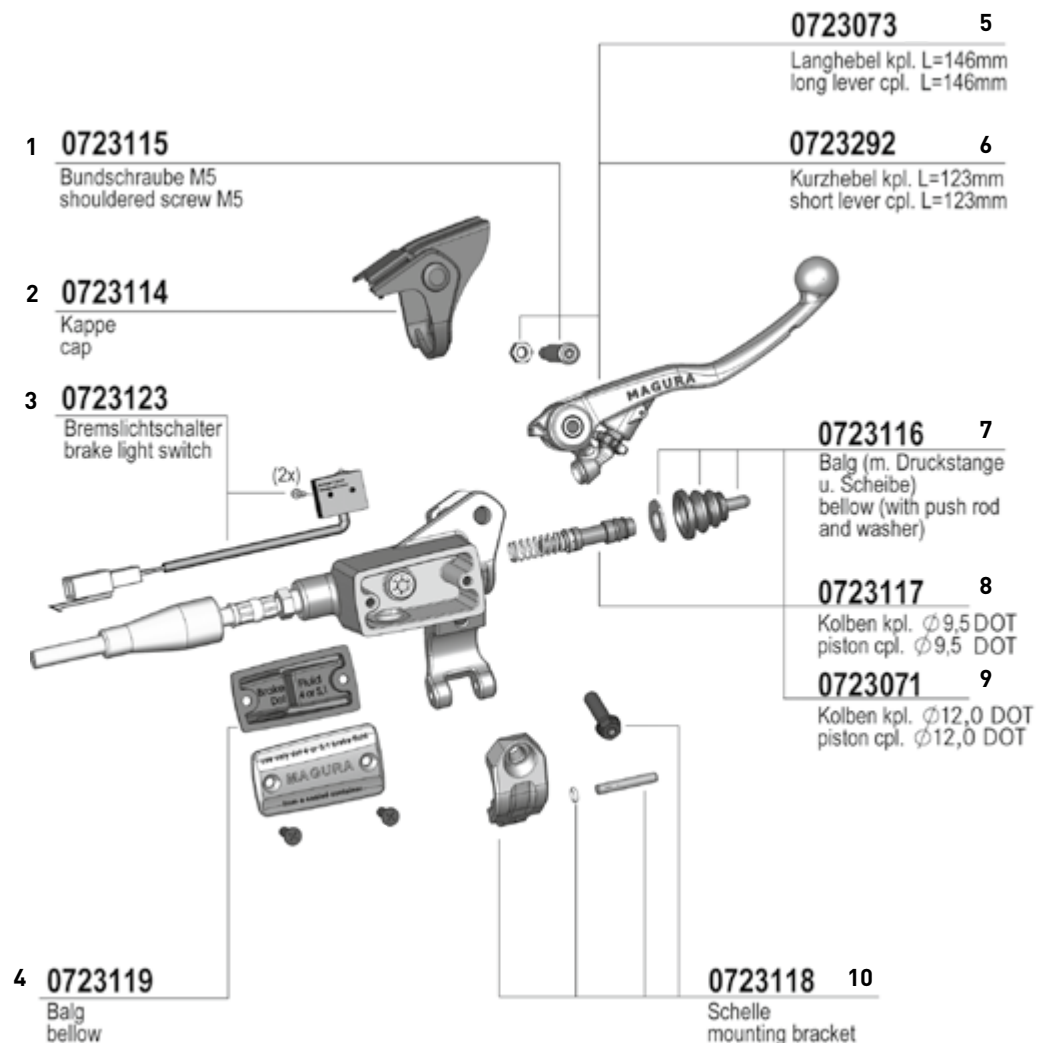
RESERVOIRS

POSITION	MODEL	DESCRIPTION/APPLICATION	ORDER CODE	RRP
1	195 Brake reservoir	16 ml flange mount for single calliper brake systems	2700786	36,50 €
2	195 Brake reservoir	36 ml remote mount for double calliper brake systems	2700488	41,20 €
3	195 Brake reservoir	9 ml remote mount for single calliper brake systems	2700490	41,20 €
4	195 Clutch reservoir	9 ml flange mount for mineral oil (compatible with HYMEC)	2700787	36,50 €
5	195 Clutch reservoir	9 ml remote mount for mineral oil	2700492	41,20 €
6	195 Clutch reservoir	9 ml remote mount for DOT	2700491	41,20 €

167 CLUTCH MASTER CYLINDER



167 BRAKE MASTER CYLINDER



SPARE PARTS FOR 190 MASTER CYLINDER

POSITION	RRP
----------	-----

CLUTCH MASTER CYLINDER

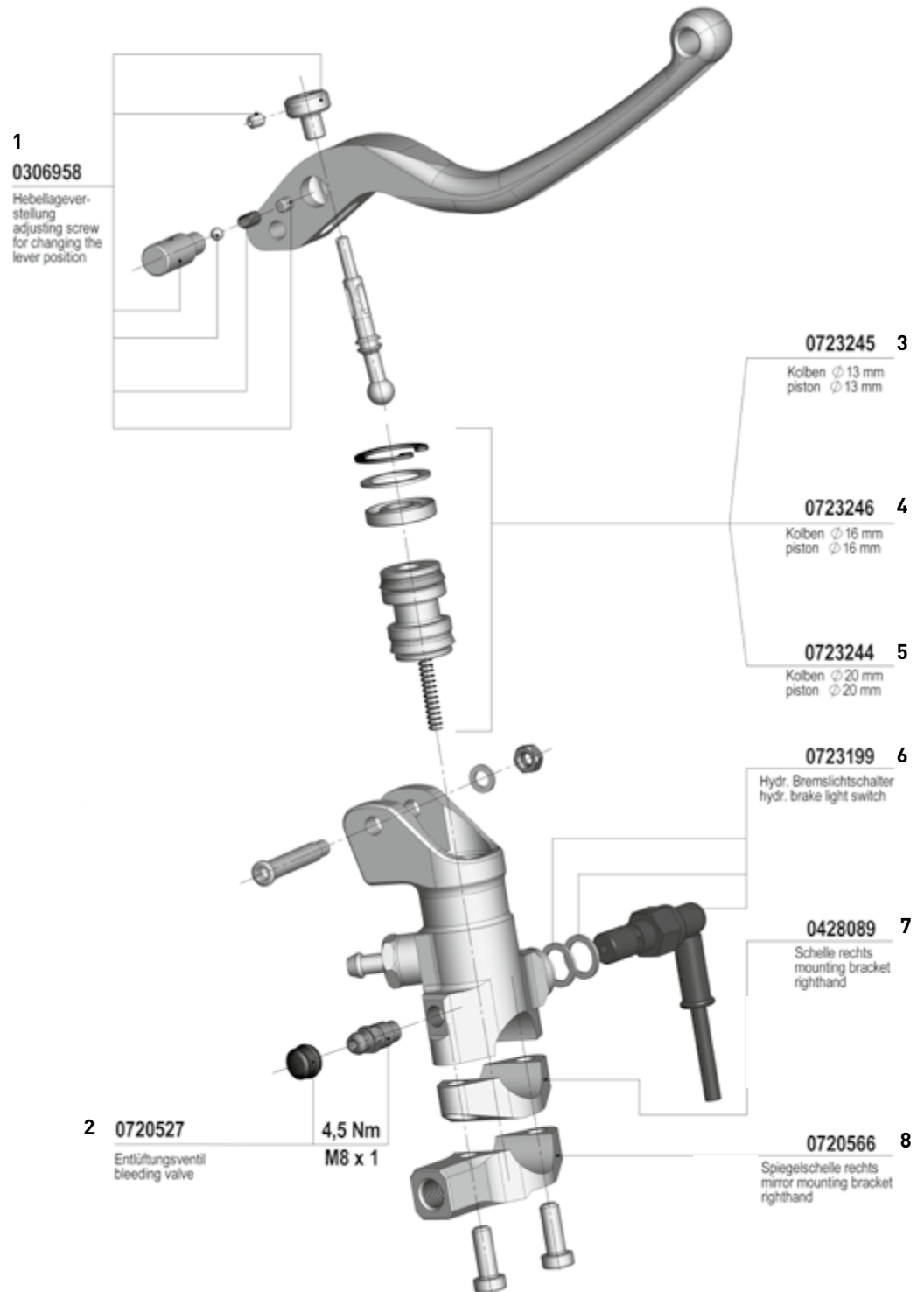
1	36,40 €
2	36,40 €
3	33,30 €
4	33,30 €
5	10,90 €
6	5,70 €
7	33,30 €
8	33,30 €
9	36,05 €
10	36,05 €
11	36,40 €
12	5,15 €
13	15,60 €
14	15,60 €
15	20,80 €
16	20,80 €
17	17,65 €
18	17,65 €
19	41,60 €
20	41,20 €
21	18,50 €
22	18,50 €

BRAKE MASTER CYLINDER

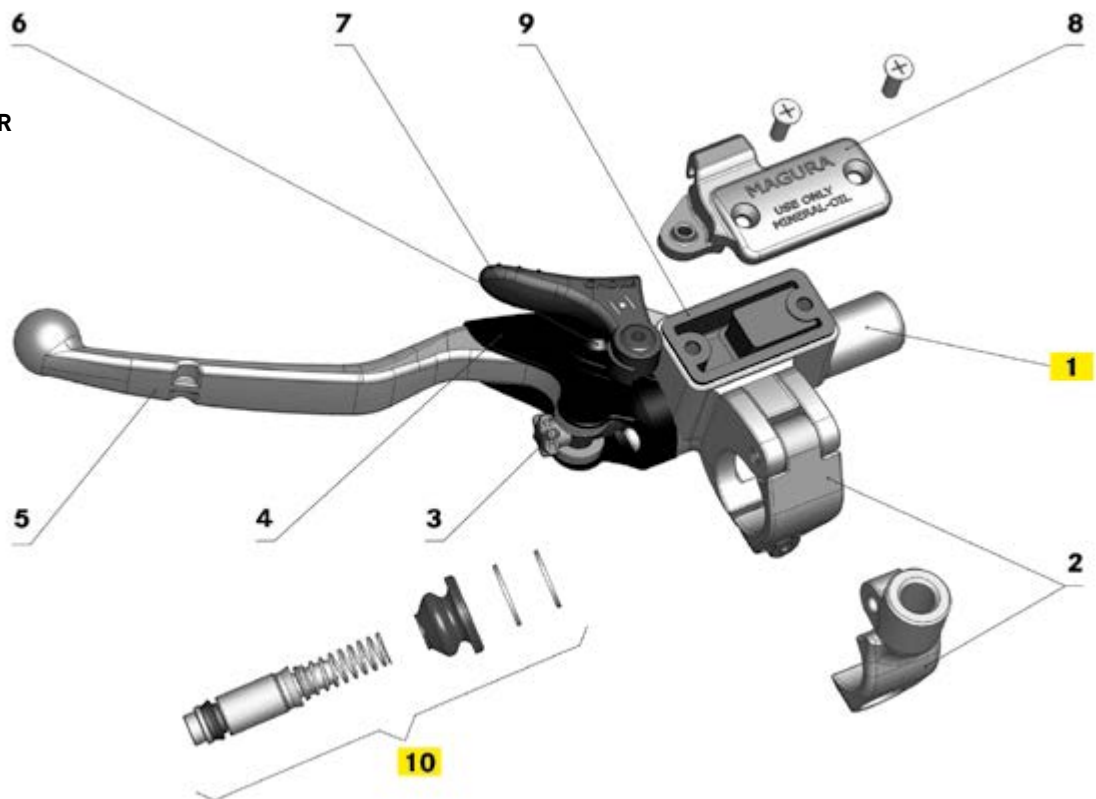
1	5,15 €
2	16,75 €
3	34,30 €
4	10,25 €
5	39,50 €
6	33,30 €
7	5,70 €
8	34,40 €
9	34,40 €
10	15,60 €

RADIAL MASTER CYLINDER

1	41,60 €
2	8,30 €
3	96,75 €
4	96,75 €
5	96,75 €
6	30,15 €
7	69,70 €
8	72,80 €



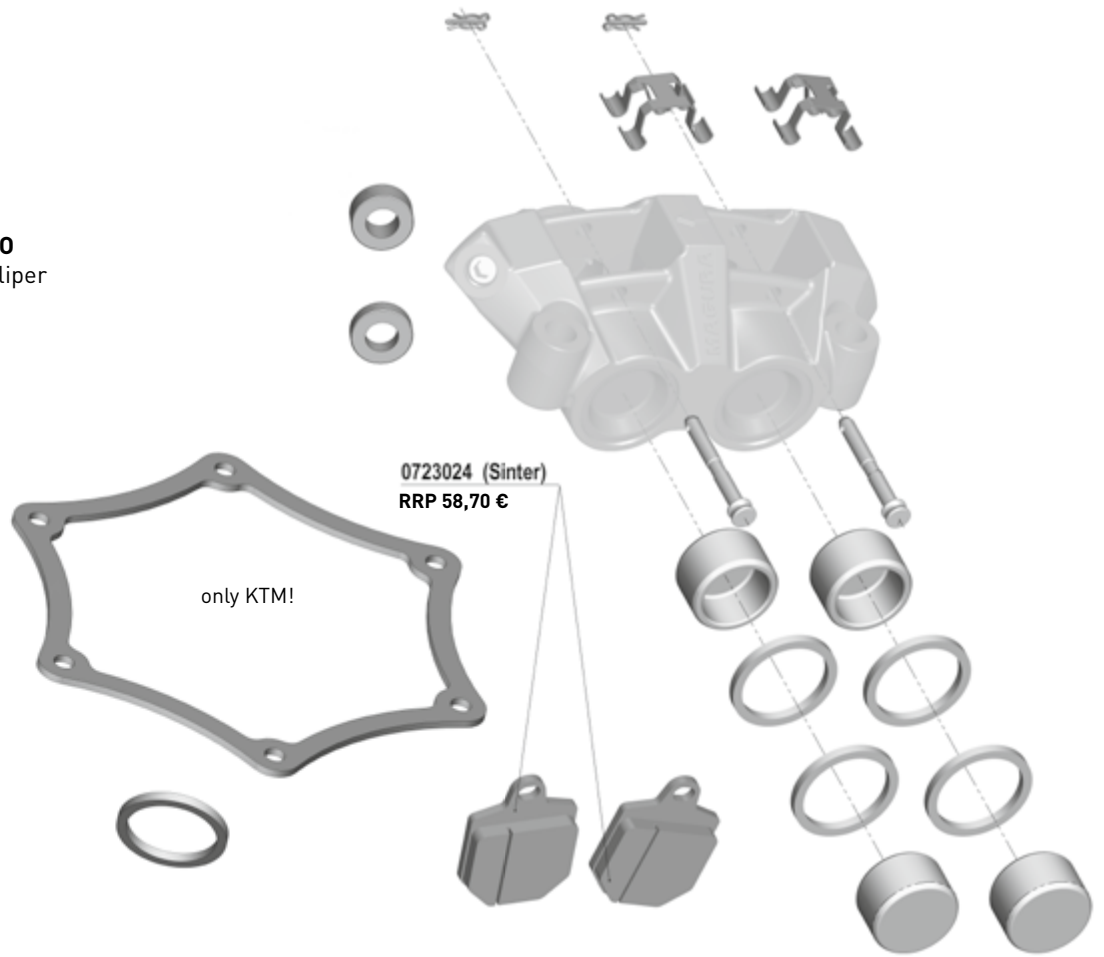
163 MASTER CYLINDER



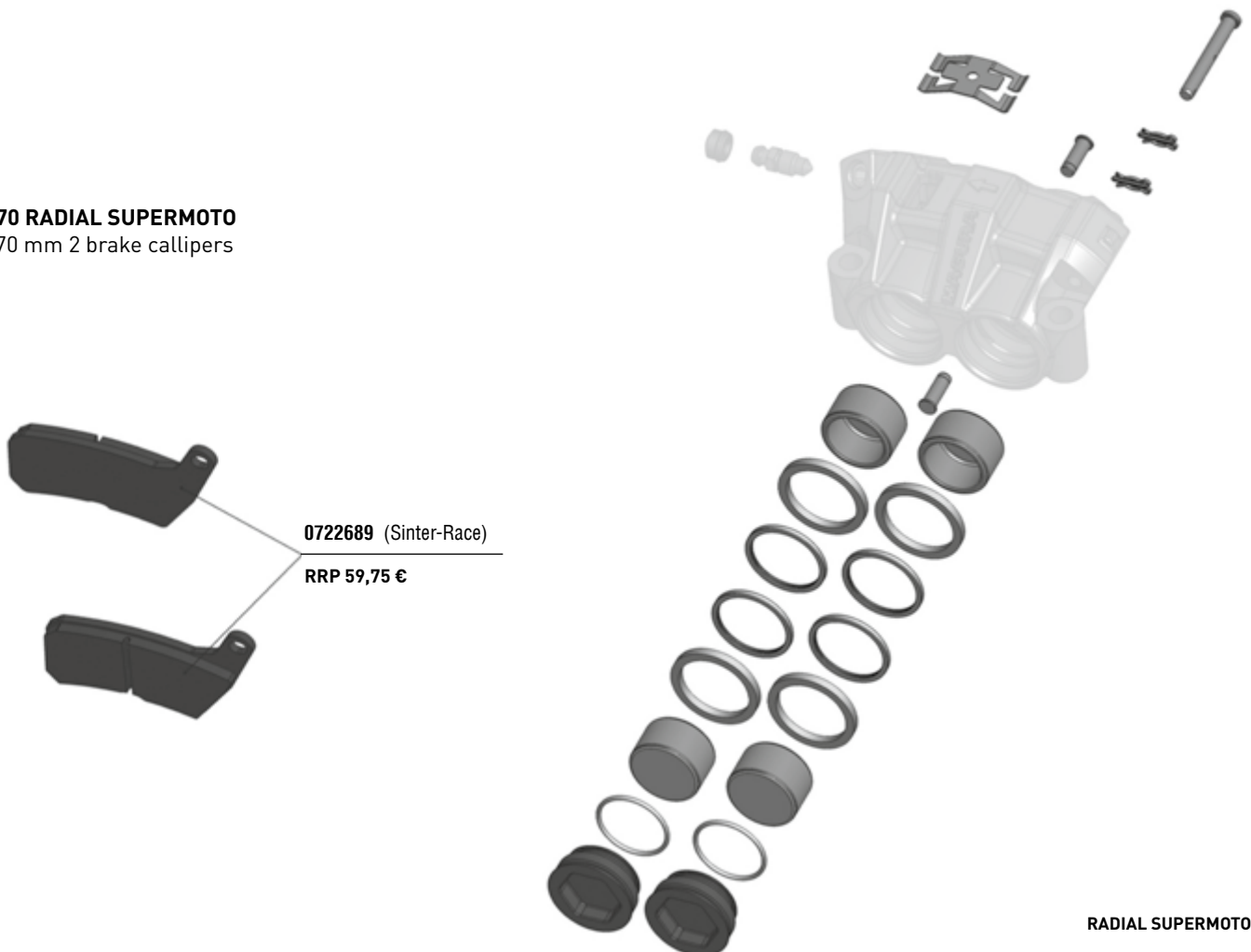
163 MASTER CYLINDER SPARE PARTS

POSITION	MODEL	ORDER CODE	RRP
1	Master cylinder - for replacement options see 167 master	Page 22/23	
2	Clamp with spiral spin	0720546	11,95 €
	Clamp for threaded mirror mounting M 10x1.25 mm	0720543	19,75 €
	Clamp schwarz for threaded mirror mounting M 10x1.25 mm	0722026 ☒	19,75 €
3	Adjuster wheel for lever, red (packaging unit 10 pcs.)	0720572	44,15 €
4	Protection cover for lever	2701680	9,25 €
5	Long lever blade with accessories and coil spring l = 147 mm	0720598	27,05 €
	Short lever blade with accessories and coil spring l = 123.5 mm	0720600	27,05 €
	Special lever blade f. master cylinders with bigger space l = 152 mm	0722021	29,10 €
6	Screw for lever	0720504 ☒	8,65 €
7	Deco lever black	0720552	8,30 €
	Choke lever black	0722118	9,35 €
	Choke lever red	0722312	9,35 €
8	Cover without deco-/choke lever	0720544	10,35 €
	Cover with thread for deco lever	0720553	17,65 €
	Cover with hole for deco lever	0720559	17,65 €
	Cover for choke lever	0722139	20,80 €
	Cover black without deco-/choke lever	0720500 ☒	12,45 €
9	Reservoir membrane for mineral oil	0720560	7,25 €
	Reservoir membrane for DOT	2701679	7,25 €
10	Master piston Ø		
	9,0mm Mineral oil	0722027	28,05 €
	9,5mm Mineral oil	0720555	28,05 €
	10,5mm Mineral oil	0720499	28,05 €
	9,5mm DOT	0723293	28,05 €
	10,5mm DOT	0720525	28,05 €

750 RADIAL SUPERMOTO
320-330 mm 1 brake calliper

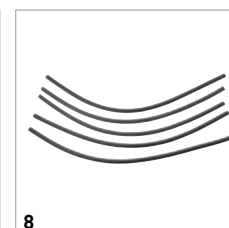
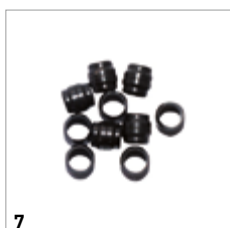
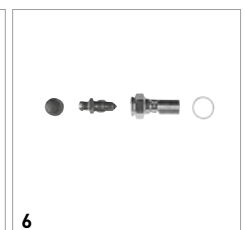
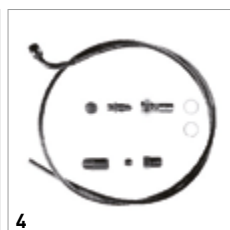
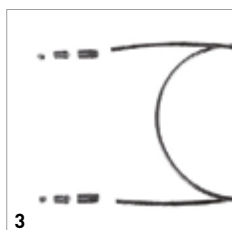


770 RADIAL SUPERMOTO
270 mm 2 brake callipers



HYDRAULIC ACCESSORIES

MODEL	DESCRIPTION/APPLICATION	ORDER CODE	RRP
CARBON TUBINGS			
	Carbon tubing kit	For HYMEC, length 1,045 mm	0722138 34,85 €
	Carbon tubing kit	For HYMEC, length 1,120 mm	0722137 34,85 €
	Banjo bolt	With bleeding valve M 6x16.5 mm for HYMEC	0722136 26,00 €
STEEL BRAIDED HOSES			
	Steel braided hose	For MAGURA Brake System 750.1, length 1,185 mm, DOT	0722146 84,25 €
1	Steel braided hose	Length 1,025 mm	0722004 52,00 €
2	Steel braided hose	KTM 4-Stroke Racing, length 975 mm	0722005 52,00 €
	Steel braided hose	KTM LC8, length 1,140 mm	0722015 52,00 €
	Steel braided hose	KTM LC4, length 1,025 mm	0722016 52,00 €
	Steel braided hose	Husaberg, length 1,020 mm	0722023 52,00 €
	Steel braided hose	KTM 250/380, length 970 mm	0722057 52,00 €
1	Steel braided hose	KTM 2-Stroke 125/200, length 970 mm	2701665 44,20 €
6	Banjo bolt	To fix the clutch tubing with thread M10x1, inclusive bleeding screw	0720505 16,60 €
5	Banjo bolt	For single brake line, without bleeding valve, M10 x1	0721786 10,80 €
	Banjo bolt	For two line fittings, M10 x1	0721789 10,80 €
PA-TUBINGS			
4	PA-tubing kit	Length 1,025 mm	0131890 44,20 €
3	PA-tubing kit	With protection tube, length 1,045 mm	0131893 29,65 €
	PA-tubing kit	KTM 65/85 SX, with protection tube, length 910 mm	0131894 24,45 €
	PA-tubing kit	KTM 4-Stroke Racing, length 975 mm	0720551 53,55 €
	PA-tubing kit	For HYMEC, length 1,500 mm, shortable	0722679 30,70 €
7	Olive/packing unit 10 pcs.	To fix the clutch tubing in the sleeve screw 0720548	0720308 20,50 €
	Banjo bolt	For HYMEC-versions with PA-tubing	0722136 26,00 €
8	Hose Kit EPDM – Pack of 5	Extension hose for brake fluid use to connect a MAGURA brake fluid reservoir to our HC1 and HC3 radial master cylinders. Length 400 mm – pack includes 5 hoses.	2701521 31,00 €
SERVICE-KITS			
9	Service-Kit HYMEC	Contains everything you need to refill MAGURA's HYMEC	0722152 22,65 €
10	MAGURA-Blood 100 ml - F/NL	High quality hydraulic mineral based oil for HYMEC	2700818 9,35 €
10	MAGURA-Blood 1 l - F/NL	High quality hydraulic mineral based oil for HYMEC	2700819 45,75 €
10	MAGURA-Blood 100 ml - D/E	High quality hydraulic mineral based oil for HYMEC	0721820 9,35 €
10	MAGURA-Blood 1l - D/E	High quality hydraulic mineral based oil for HYMEC	0721821 45,75 €
11	MAGURA Royal Blood 100 ml	High quality hydraulic mineral based oil for hydraulic clutch systems	0721630 6,50 €
11	MAGURA Royal Blood 1 l	High quality hydraulic mineral based oil for hydraulic clutch systems	0721631 33,50 €



1

2

3

4

5

6

7

8

9

10

11

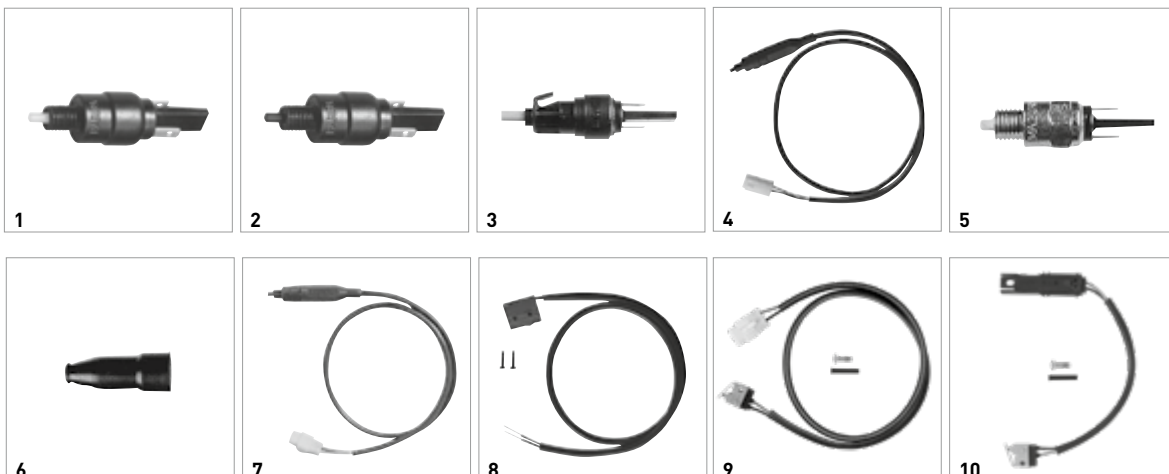


MAGURA ANTIBUG: KEEPING YOUR VISION CLEAR

PIECE	DESCRIPTION/APPLICATION	ORDER CODE	RRP
1	With its new Antibug visor cleaning sponge, MAGURA has a chemical-free alternative to keep your helmet visor free from insects and dirt.	2701163	6,00 €

SWITCHES

MODEL	DESCRIPTION/APPLICATION	ORDER CODE	RRP
1 Switch 558.61	On in paused position, white pusher, micro-switch with spring, for thread 1/4"	0128496	10,95 €
2 Switch 558.12	Off in paused position, black pusher, for thread 1/4", start safety switch for MAGURA-model 163	0128500	10,95 €
3 Switch 558.51	On in paused position, pluggable, blue pusher, for MAGURA-models 116/117, for Suzuki and Simson scooters	0128510	10,95 €
4 Switch 163 B	For Yamaha XT 660 – HYMEC, cable length 620 mm	0306938	28,60 €
5 Switch 558.34	On in paused position, white pusher, for thread M 8x1	2701689	10,95 €
Switch 701	Hydraulic brake light switch	0723199	30,15 €
6 Protection cover 558	For all switch models 558 small inner-Ø 3.6/ big inner-Ø 10.5	2701676	8,45 €
7 Clutch switch 163	KTM-models LC 4 from 2003 and LC 6, for thread 1/4", cable length 550 mm	0722014	25,45 €
8 Switch 195	For RADIAL 195 Clutch	0722102	31,20 €
9 Switch 195	For RADIAL 195 Brake, cable length 400 mm	0722213	30,70 €
10 Clutch switch 167	For MAGURA model 167 (Clutch)	0723187	41,60 €
11 Clutch switch 167	For BMW-HYMEC (Clutch)	2700384	41,20 €
Brake light switch 167	For MAGURA model 167 (ATV-Brake), cable length 760 mm	0723197	40,05 €
Brake light switch 167	For MAGURA model 167, cable length 400 mm	0723123	34,30 €



GRIPS, PAIRS OF GRIPS



MODEL	DESCRIPTION/APPLICATION	LENGTH IN MM	ORDER CODE	RRP
1	150 sz*/151 sz* for tube-Ø 25/22	129	0720850	15,60 €
2	125 sz* for tube-Ø 25/22	125	0720851	17,65 €
3	312 szw* for tube-Ø 25/22	125	0720853	19,75 €
4	250 ksz* for tube-Ø 25/22	114	0720854	9,10 €
5	289 tsz* for tube-Ø 25/22	126	0720855	12,60 €
5	250 ksz* for tube-Ø 25, Wulst-Ø 48	124	2701673	19,75 €
6	316 ksz* for tube-Ø 25/22	116	0720856	9,10 €
7	DAB6 sz for tube-Ø 27,5	116	0720920	13,50 €
8	DAB6 sz for tube-Ø 27,5	121	2701492	55,00 €
9	125 sz* for tube-Ø 25/22	125	2701489	44,30 €
10	306 sz* for tube-Ø 25/22	129	2701490	19,30 €
11	270 ksz* for tube-Ø 25/22	129	2701491	12,50 €

*
sz | rubber black
szw | rubber black, soft
ksz | fibre reinforced black
tsz | thermoplastic
elastomer, black

SOLDERNIPPLE, SOLDER NIPPLE BARRELS






PACKING UNIT	DIMENSIONS IN MM			ORDER CODE	RRP
	Ø WIDTH	LENGTH	HOLE		
SOLDER NIPPLES BARREL					
10	9/8	15,5	2,5	2701504	20,94 €
10	10	11,6	2,3	2701505	36,05 €
SOLDER NIPPLES					
10	6/3,5	13	2,3	2701506	16,55 €
10	6/3,5	8	2,3	2701507	32,50 €
10	6/3,5	8	2,0	2701508	20,50 €

NIPPLE ASSORTMENT









DESCRIPTION/APPLICATION	ORDER CODE	RRP
A well sorted selection of 100 various screw nipples, solder nipples and nipple barrels in a very comfortable plastic box. "A need in biker's garage!"	0736500	81,15 €




SCREW NIPPLES

	PACKING UNIT	DIMENSIONS IN MM			ORDER CODE	RRP
		Ø WIDTH	LENGTH	HOLE		
	10	8	8,5	2,5	2701509	52,55 €
	10	6	9	2,5	2701510	52,55 €
	10	5	9,5	2	2701511	93,95 €
	10	8	15	2,3	2701512	52,55 €
	10	5	7,5	2	2701513	27,55 €

ADJUSTING SCREWS

	PACKING UNIT	Ø WIDTH	DIMENSIONS IN MM		ORDER CODE	RRP	RRP
			LENGTH	HOLE			
UNSLOTTED ADJUSTING SCREW, WITH KNURLED METAL NUT							
	1	M 6	32	6,8	2,8	2701515	4,30 €
	1	M 6	41	6,1	2,5	2701516	6,95 €
	1	M6x0,75	31	6,5	3	2701517	1,68 €
	1	M 10x1	44	11	6,2	2701523	6,95 €
SLOTTED ADJUSTING SCREW, WITH KNURLED METAL NUT							
	1	M 7	42	6,5	3,5	2701518	8,85 €
	1	M 7	42	8,2	3,5	2701519	8,85 €
	1	M 6	32	6,5	2,2	2701520	8,85 €
	1	M10x1	44	11	2,4	2701522	6,95 €

	PACKING UNIT	DESCRIPTION/APPLICATION	ORDER CODE	RRP
	10	Cylinder bolt with shaft and thread M5 x 19.5, Bolt head Ø 9 mm with Philips H2 fitting, Shaft Ø 6 mm, shaft length 10.2mm, thread length 6 mm.	2701514	4,65 €

MAG URA

TRUSTS
IN SPECIALISTS



LIQUI MOLY

MAGURA PLACES ITS TRUST IN STRONG PARTNERSHIPS, LIKE WITH LIQUI MOLY. THE LUBRICATION SPECIALISTS FROM ULM ARE THE FIRST CHOICE FOR MAGURA WHEN IT COMES TO PREMIUM OILS AND LUBRICANTS. ASK YOUR MAGURA DEALER WHICH LIQUI MOLY PRODUCTS ARE SUITABLE FOR YOUR MOTORCYCLE.



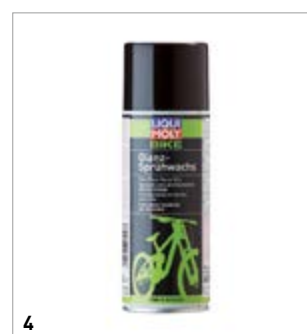
1



2



3



4



5



6



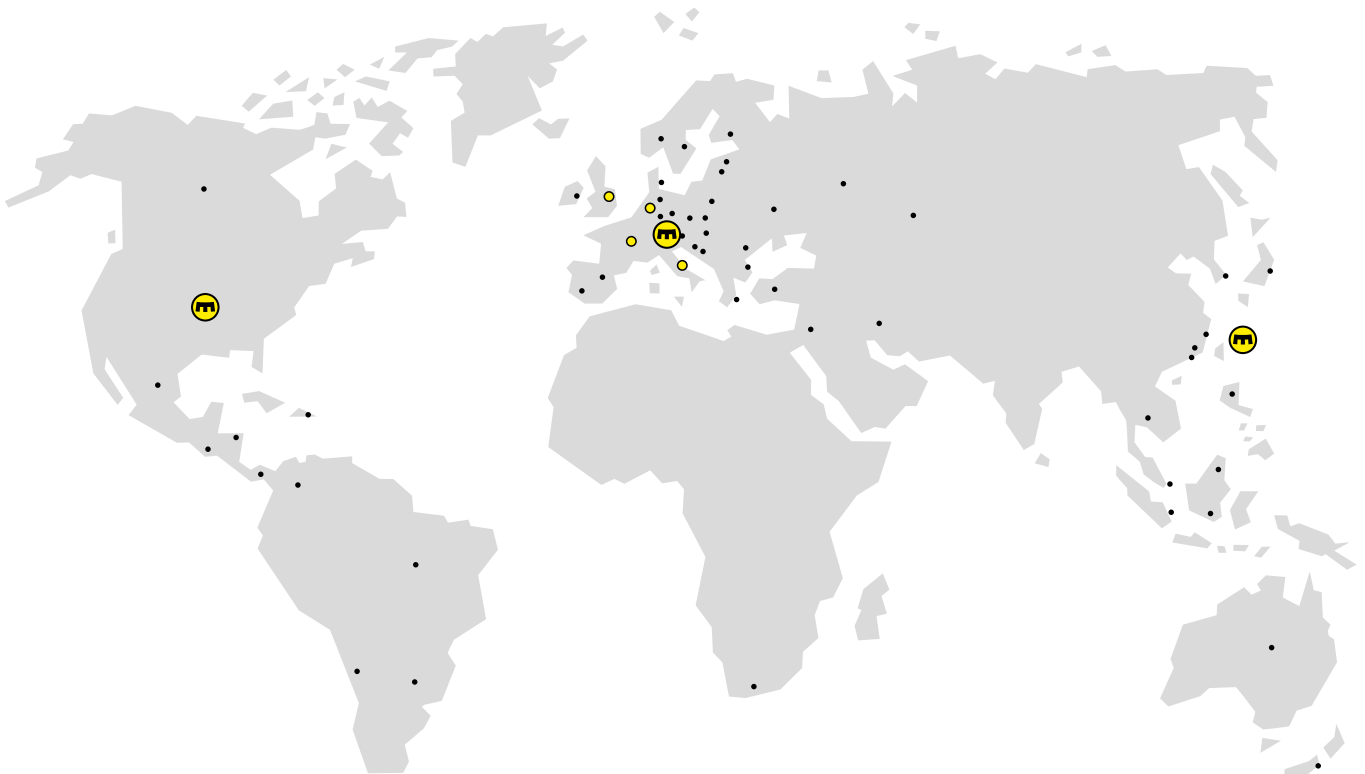
7



8

POSITION	DESCRIPTION/APPLICATION	ORDER CODE	RRP
1	Motorbike Cleaner, 1 l	2100566	12,29 €
2	Motorbike Chain Lube, 200 ml	2100811	6,09 €
	Motorbike Chain Lube, 400 ml	2100567	8,89 €
3	Motorbike Multispray, 50 ml	2100570	4,39 €
4	Motorbike Gloss Spray Wax, 400 ml	2100571	14,89 €
5	Brake Part Cleaner, 500 ml	0103661	7,19 €
6	Thread Lock High Strength, 10 g	2100572	5,09 €
7	Thread Lock Medium Strength, 10 g	2100573	5,09 €
8	Liquid Hand-Wash-Paste, 500 ml	2100574	9,98 €

MAGURA NETWORK



Follow us:



facebook.com/magurapassionpeople



instagram.com/magura_powersports



MAGURA

MAGURA Bike Parts GmbH & Co. KG
Eckisstraße 6 · D-72574 Bad Urach, Germany
+49 (0)7125 969460 · info@magura.de · magura.com

© MAGURA, All rights reserved · Printed in Germany ·
3000 · 2 701 806 · 8/2018 · Features may be subject to change